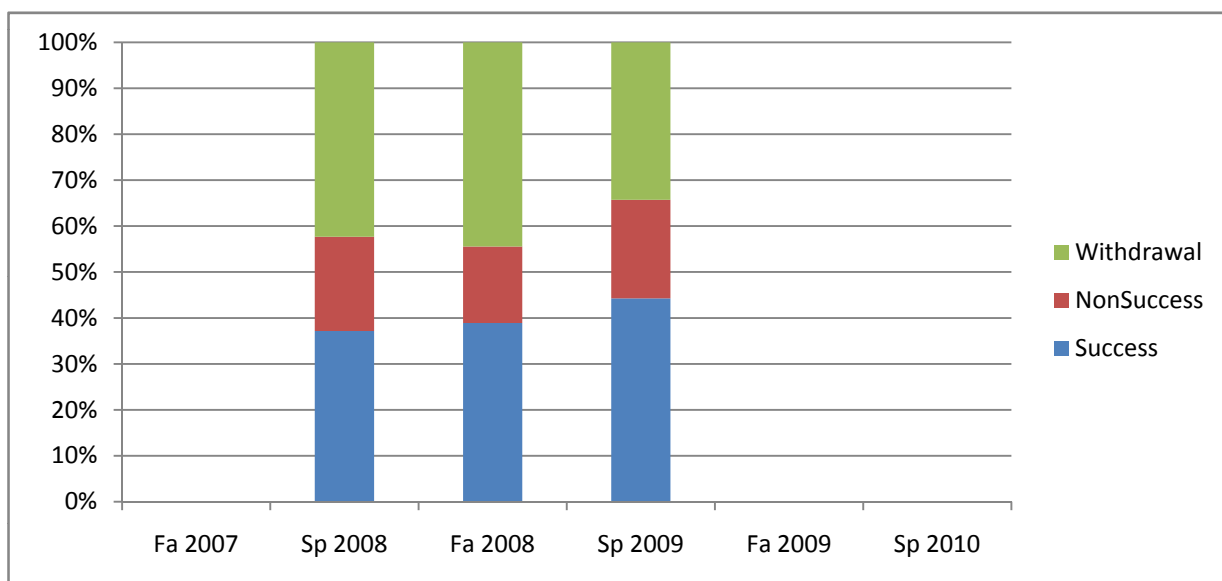
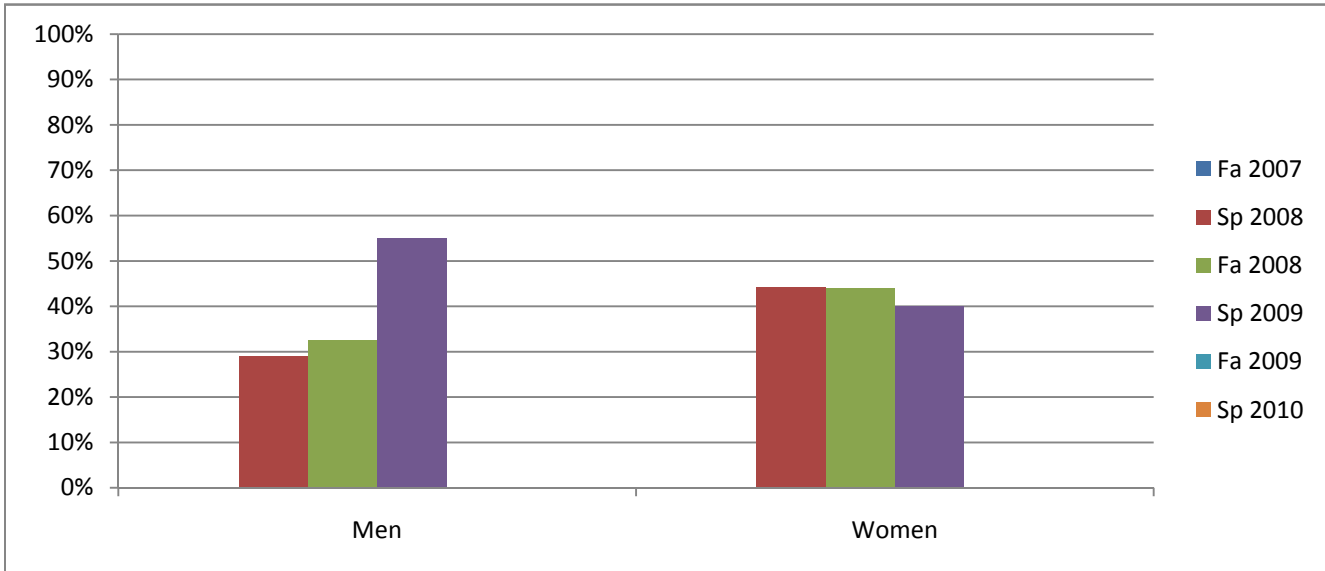


Chabot
Success, Non-Success, and Withdrawal Rates By Semester
Course: MTH 65L



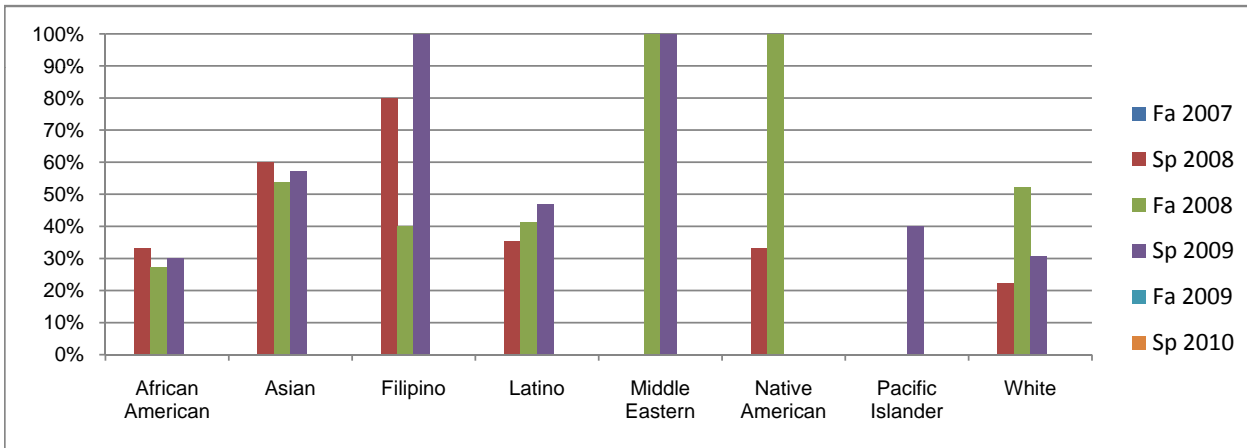
| | Fa 2007 | Sp 2008 | Fa 2008 | Sp 2009 | Fa 2009 | Sp 2010 |
|----------------|----------|-----------|------------|-----------|----------|----------|
| Success | 0% | 37% | 39% | 44% | 0% | 0% |
| Non-Success | 0% | 21% | 17% | 21% | 0% | 0% |
| Withdrawal | 0% | 42% | 44% | 34% | 0% | 0% |
| Total Percent | 0% | 100% | 100% | 100% | 0% | 0% |
| Total Enrolled | 0 | 78 | 162 | 70 | 0 | 0 |

Chabot
Success Rates By Gender and Semester
Course: MTH 65L



| | Fa 2007 | Sp 2008 | Fa 2008 | Sp 2009 | Fa 2009 | Sp 2010 |
|----------------|---------|---------|---------|---------|---------|---------|
| Men | | | | | | |
| Success | 0% | 29% | 32% | 55% | 0% | 0% |
| Non-Success | 0% | 23% | 19% | 20% | 0% | 0% |
| Withdrawal | 0% | 48% | 48% | 25% | 0% | 0% |
| Total Percent | 0% | 100% | 100% | 100% | 0% | 0% |
| Total Enrolled | 0 | 31 | 77 | 20 | 0 | 0 |
| Women | | | | | | |
| Success | 0% | 44% | 44% | 40% | 0% | 0% |
| Non-Success | 0% | 21% | 14% | 22% | 0% | 0% |
| Withdrawal | 0% | 35% | 42% | 38% | 0% | 0% |
| Total Percent | 0% | 100% | 100% | 100% | 0% | 0% |
| Total Enrolled | 0 | 43 | 84 | 50 | 0 | 0 |

Chabot
Success Rates By Ethnicity and Semester
Course: MTH 65L



| | Fa 2007 | Sp 2008 | Fa 2008 | Sp 2009 | Fa 2009 | Sp 2010 |
|-------------------------|---------|---------|---------|---------|---------|---------|
| African American | | | | | | |
| Success | 0% | 33% | 27% | 30% | 0% | 0% |
| Non-Success | 0% | 27% | 23% | 20% | 0% | 0% |
| Withdrawal | 0% | 40% | 50% | 50% | 0% | 0% |
| Total Percent | 0% | 100% | 100% | 100% | 0% | 0% |
| Total Enrolled | 0 | 15 | 44 | 20 | 0 | 0 |
| Asian | | | | | | |
| Success | 0% | 60% | 54% | 57% | 0% | 0% |
| Non-Success | 0% | 20% | 15% | 0% | 0% | 0% |
| Withdrawal | 0% | 20% | 31% | 43% | 0% | 0% |
| Total Percent | 0% | 100% | 100% | 100% | 0% | 0% |
| Total Enrolled | 0 | 10 | 13 | 7 | 0 | 0 |
| Filipino | | | | | | |
| Success | 0% | 80% | 40% | 100% | 0% | 0% |
| Non-Success | 0% | 0% | 20% | 0% | 0% | 0% |
| Withdrawal | 0% | 20% | 40% | 0% | 0% | 0% |
| Total Percent | 0% | 100% | 100% | 100% | 0% | 0% |
| Total Enrolled | 0 | 5 | 5 | 4 | 0 | 0 |
| Latino | | | | | | |
| Success | 0% | 35% | 41% | 47% | 0% | 0% |
| Non-Success | 0% | 19% | 17% | 29% | 0% | 0% |
| Withdrawal | 0% | 45% | 41% | 24% | 0% | 0% |
| Total Percent | 0% | 100% | 100% | 100% | 0% | 0% |
| Total Enrolled | 0 | 31 | 58 | 17 | 0 | 0 |
| Middle Eastern | | | | | | |
| Success | 0% | 0% | 100% | 100% | 0% | 0% |
| Non-Success | 0% | 0% | 0% | 0% | 0% | 0% |
| Withdrawal | 0% | 0% | 0% | 0% | 0% | 0% |
| Total Percent | 0% | 0% | 100% | 100% | 0% | 0% |
| Total Enrolled | 0 | 0 | 1 | 1 | 0 | 0 |
| Native American | | | | | | |
| Success | 0% | 33% | 100% | 0% | 0% | 0% |
| Non-Success | 0% | 33% | 0% | 0% | 0% | 0% |
| Withdrawal | 0% | 33% | 0% | 0% | 0% | 0% |
| Total Percent | 0% | 100% | 100% | 0% | 0% | 0% |
| Total Enrolled | 0 | 3 | 1 | 0 | 0 | 0 |
| Pacific Islander | | | | | | |
| Success | 0% | 0% | 0% | 40% | 0% | 0% |
| Non-Success | 0% | 100% | 14% | 40% | 0% | 0% |
| Withdrawal | 0% | 0% | 86% | 20% | 0% | 0% |
| Total Percent | 0% | 100% | 100% | 100% | 0% | 0% |
| Total Enrolled | 0 | 1 | 7 | 5 | 0 | 0 |
| White | | | | | | |
| Success | 0% | 22% | 52% | 31% | 0% | 0% |
| Non-Success | 0% | 0% | 4% | 23% | 0% | 0% |
| Withdrawal | 0% | 78% | 43% | 46% | 0% | 0% |
| Total Percent | 0% | 100% | 100% | 100% | 0% | 0% |
| Total Enrolled | 0 | 9 | 23 | 13 | 0 | 0 |