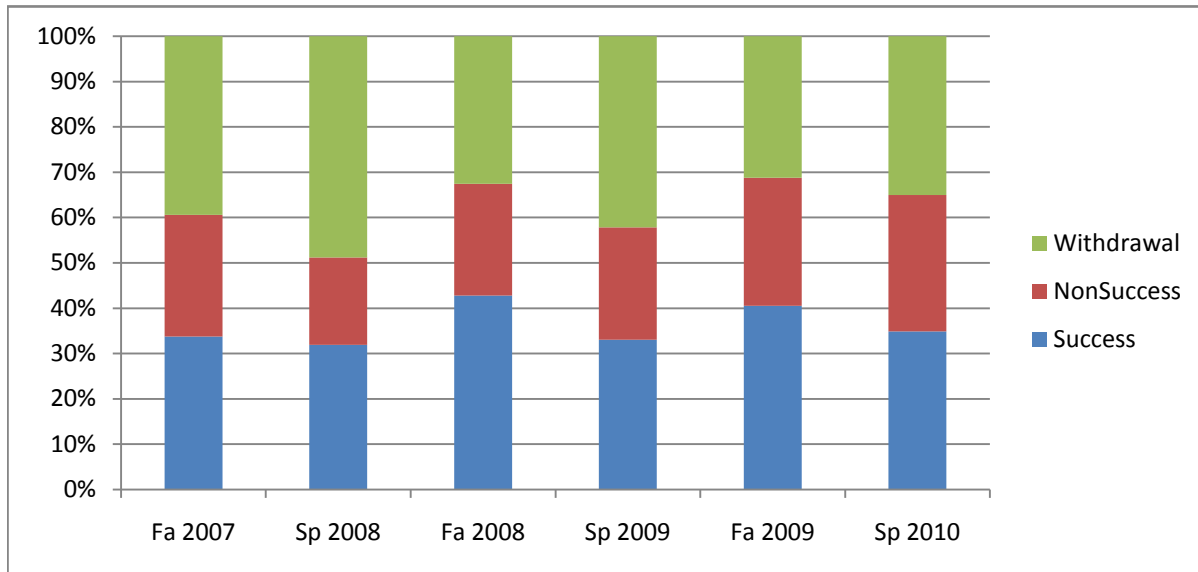
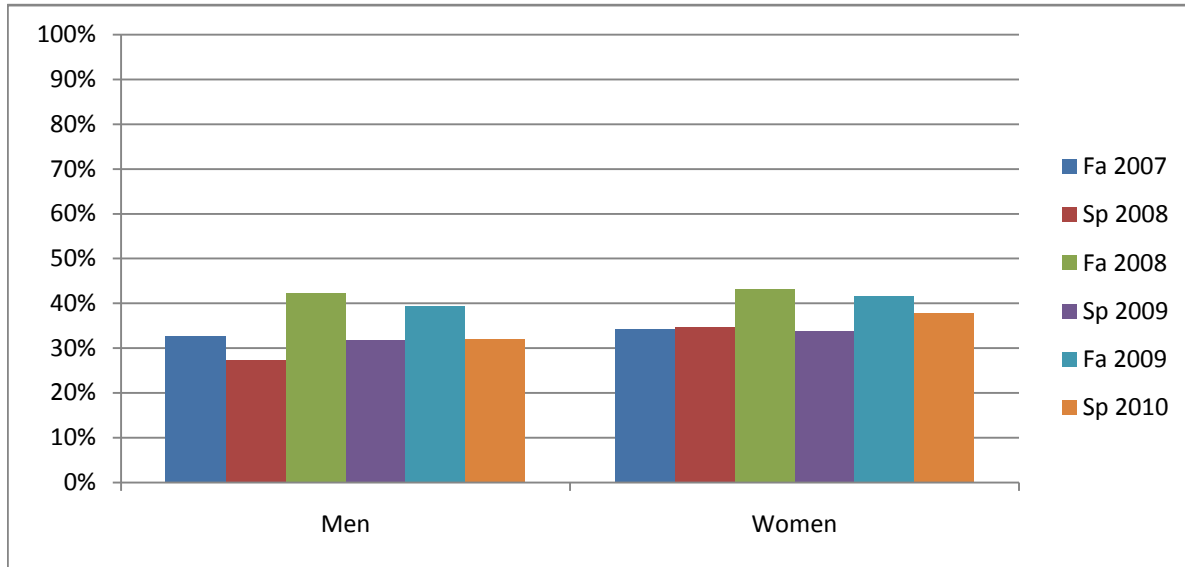


Chabot  
Success, Non-Success, and Withdrawal Rates By Semester  
Course: MTH 65



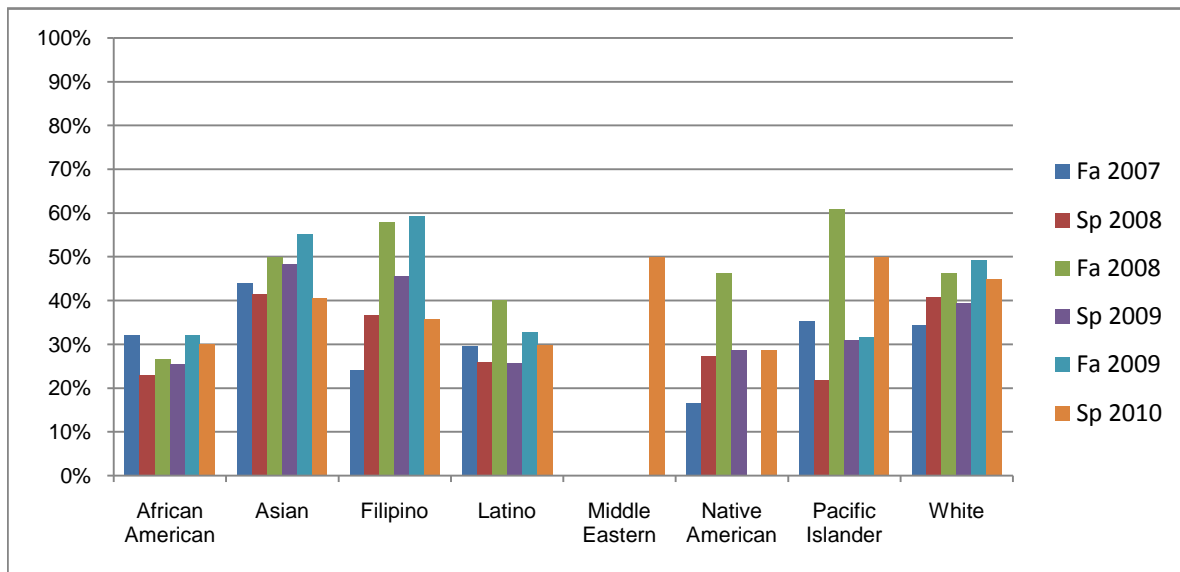
	Fa 2007	Sp 2008	Fa 2008	Sp 2009	Fa 2009	Sp 2010
Success	34%	32%	43%	33%	41%	35%
Non-Success	27%	19%	25%	25%	28%	30%
Withdrawal	39%	49%	33%	42%	31%	35%
Total Percent	100%	100%	100%	100%	100%	100%
Total Enrolled	809	592	608	647	698	702

Chabot  
Success Rates By Gender and Semester  
Course: MTH 65



	Fa 2007	Sp 2008	Fa 2008	Sp 2009	Fa 2009	Sp 2010
<b>Men</b>						
Success	33%	27%	42%	32%	39%	32%
Non-Success	24%	23%	28%	26%	29%	29%
Withdrawal	43%	50%	30%	42%	31%	39%
Total Percent	100%	100%	100%	100%	100%	100%
Total Enrolled	<b>327</b>	<b>216</b>	<b>220</b>	<b>264</b>	<b>277</b>	<b>296</b>
<b>Women</b>						
Success	34%	35%	43%	34%	42%	38%
Non-Success	29%	18%	22%	25%	28%	31%
Withdrawal	37%	48%	35%	42%	30%	31%
Total Percent	100%	100%	100%	100%	100%	100%
Total Enrolled	<b>474</b>	<b>368</b>	<b>379</b>	<b>370</b>	<b>410</b>	<b>394</b>

Chabot  
Success Rates By Ethnicity and Semester  
Course: MTH 65



	Fa 2007	Sp 2008	Fa 2008	Sp 2009	Fa 2009	Sp 2010
<b>African American</b>						
Success	32%	23%	27%	26%	32%	30%
Non-Success	22%	18%	29%	30%	31%	25%
Withdrawal	46%	59%	44%	44%	36%	45%
Total Percent	100%	100%	100%	100%	100%	100%
Total Enrolled	149	122	120	145	118	136
<b>Asian</b>						
Success	44%	42%	50%	48%	55%	41%
Non-Success	22%	23%	26%	24%	18%	28%
Withdrawal	34%	35%	24%	28%	27%	31%
Total Percent	100%	100%	100%	100%	100%	100%
Total Enrolled	91	65	54	58	67	74
<b>Filipino</b>						
Success	24%	37%	58%	46%	59%	36%
Non-Success	36%	15%	19%	21%	23%	41%
Withdrawal	40%	48%	23%	34%	17%	23%
Total Percent	100%	100%	100%	100%	100%	100%
Total Enrolled	87	60	69	68	64	56
<b>Latino</b>						
Success	30%	26%	40%	26%	33%	30%
Non-Success	29%	24%	28%	23%	32%	35%
Withdrawal	41%	50%	32%	51%	35%	35%
Total Percent	100%	100%	100%	100%	100%	100%
Total Enrolled	246	146	180	175	247	241
<b>Middle Eastern</b>						
Success	0%	0%	0%	0%	0%	50%
Non-Success	0%	0%	100%	0%	100%	25%
Withdrawal	0%	0%	0%	0%	0%	25%

Total Percent	0%	0%	100%	0%	100%	100%
Total Enrolled	<b>0</b>	<b>0</b>	<b>1</b>	<b>0</b>	<b>1</b>	<b>4</b>
<b>Native American</b>						
Success	17%	27%	46%	29%	0%	29%
Non-Success	50%	27%	15%	0%	0%	43%
Withdrawal	33%	45%	38%	71%	100%	29%
Total Percent	100%	100%	100%	100%	100%	100%
Total Enrolled	<b>6</b>	<b>11</b>	<b>13</b>	<b>7</b>	<b>3</b>	<b>7</b>
<b>Pacific Islander</b>						
Success	35%	22%	61%	31%	32%	50%
Non-Success	21%	22%	9%	31%	53%	15%
Withdrawal	44%	57%	30%	38%	16%	35%
Total Percent	100%	100%	100%	100%	100%	100%
Total Enrolled	<b>34</b>	<b>23</b>	<b>23</b>	<b>29</b>	<b>19</b>	<b>20</b>
<b>White</b>						
Success	34%	41%	46%	39%	49%	45%
Non-Success	31%	14%	23%	23%	22%	25%
Withdrawal	35%	46%	31%	38%	29%	30%
Total Percent	100%	100%	100%	100%	100%	100%
Total Enrolled	<b>134</b>	<b>103</b>	<b>106</b>	<b>114</b>	<b>114</b>	<b>109</b>