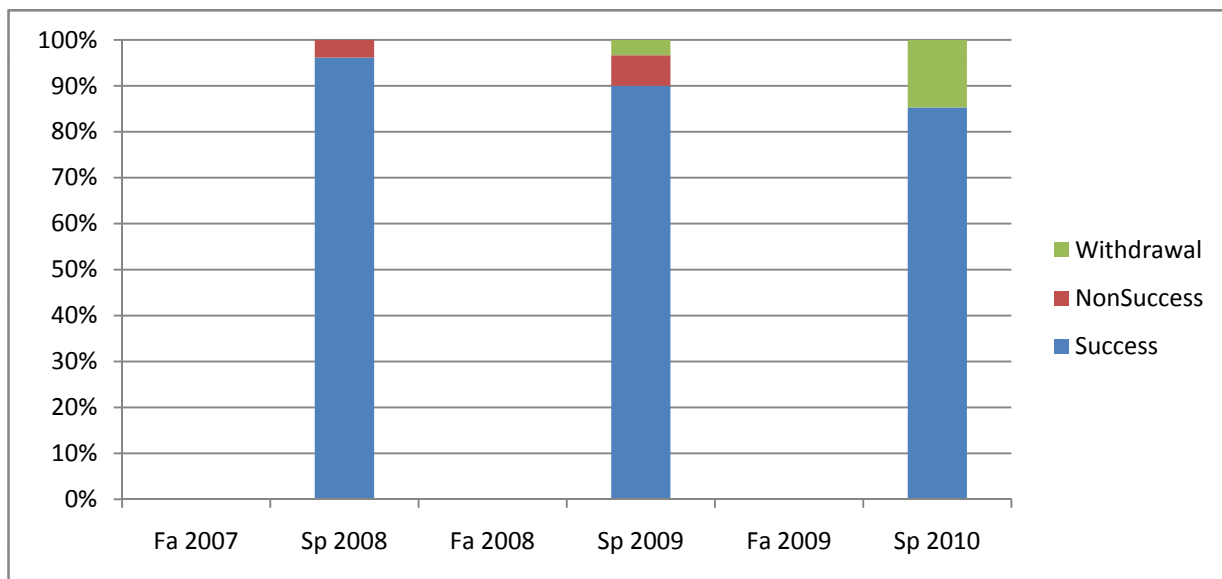
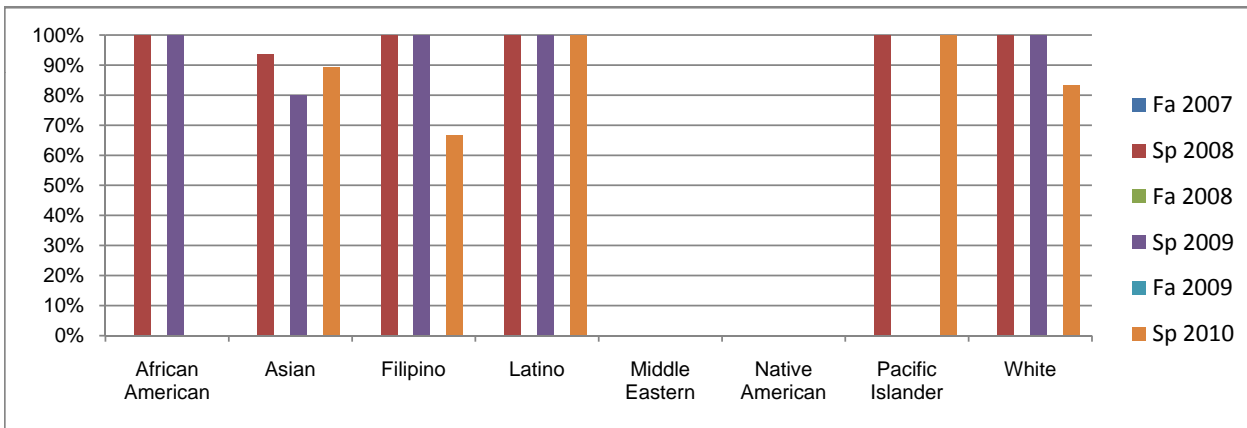


Chabot
Success, Non-Success, and Withdrawal Rates By Semester
Course: PHYS 2B



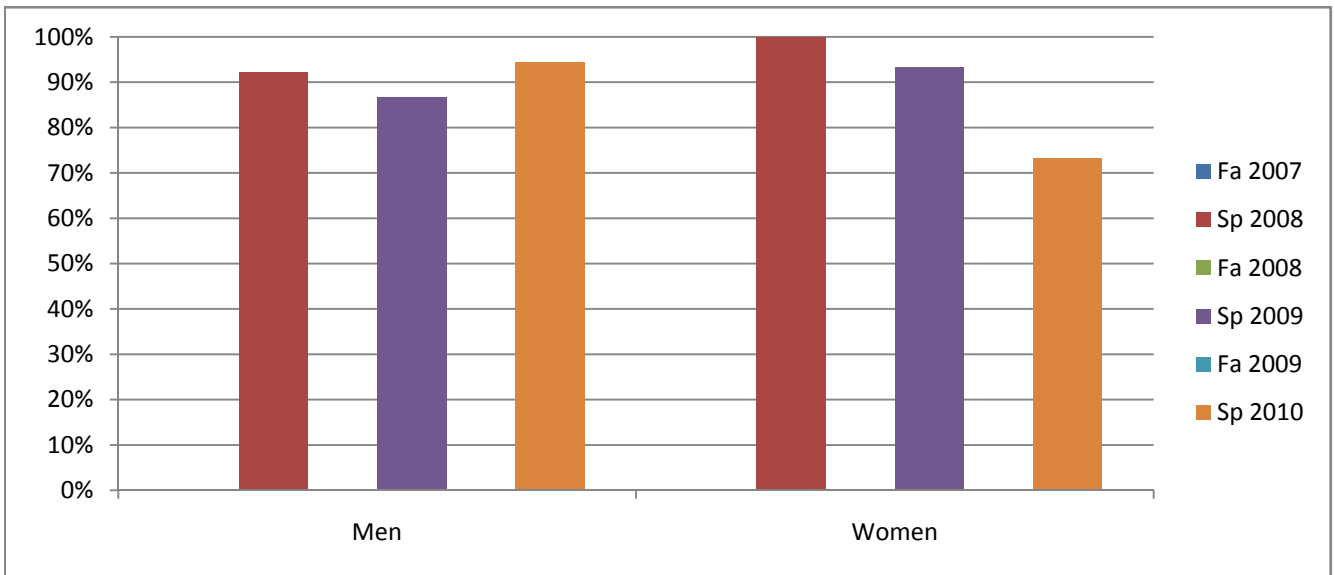
	Fa 2007	Sp 2008	Fa 2008	Sp 2009	Fa 2009	Sp 2010
Success	0%	96%	0%	90%	0%	85%
Non-Success	0%	4%	0%	7%	0%	0%
Withdrawal	0%	0%	0%	3%	0%	15%
Total Percent	0%	100%	0%	100%	0%	100%
Total Enrolled	0	26	0	30	0	34

Chabot
Success Rates By Ethnicity and Semester
Course: PHYS 2B



	Fa 2007	Sp 2008	Fa 2008	Sp 2009	Fa 2009	Sp 2010
African American						
Success	0%	100%	0%	100%	0%	0%
Non-Success	0%	0%	0%	0%	0%	0%
Withdrawal	0%	0%	0%	0%	0%	0%
Total Percent	0%	100%	0%	100%	0%	0%
Total Enrolled	0	2	0	1	0	0
Asian						
Success	0%	94%	0%	80%	0%	89%
Non-Success	0%	6%	0%	13%	0%	0%
Withdrawal	0%	0%	0%	7%	0%	11%
Total Percent	0%	100%	0%	100%	0%	100%
Total Enrolled	0	16	0	15	0	19
Filipino						
Success	0%	100%	0%	100%	0%	67%
Non-Success	0%	0%	0%	0%	0%	0%
Withdrawal	0%	0%	0%	0%	0%	33%
Total Percent	0%	100%	0%	100%	0%	100%
Total Enrolled	0	1	0	5	0	3
Latino						
Success	0%	100%	0%	100%	0%	100%
Non-Success	0%	0%	0%	0%	0%	0%
Withdrawal	0%	0%	0%	0%	0%	0%
Total Percent	0%	100%	0%	100%	0%	100%
Total Enrolled	0	2	0	1	0	1
Middle Eastern						
Success	0%	0%	0%	0%	0%	0%
Non-Success	0%	0%	0%	0%	0%	0%
Withdrawal	0%	0%	0%	0%	0%	0%
Total Percent	0%	0%	0%	0%	0%	0%
Total Enrolled	0	0	0	0	0	0
Native American						
Success	0%	0%	0%	0%	0%	0%
Non-Success	0%	0%	0%	0%	0%	0%
Withdrawal	0%	0%	0%	0%	0%	0%
Total Percent	0%	0%	0%	0%	0%	0%
Total Enrolled	0	0	0	0	0	0
Pacific Islander						
Success	0%	100%	0%	0%	0%	100%
Non-Success	0%	0%	0%	0%	0%	0%
Withdrawal	0%	0%	0%	0%	0%	0%
Total Percent	0%	100%	0%	0%	0%	100%
Total Enrolled	0	1	0	0	0	1
White						
Success	0%	100%	0%	100%	0%	83%
Non-Success	0%	0%	0%	0%	0%	0%
Withdrawal	0%	0%	0%	0%	0%	17%
Total Percent	0%	100%	0%	100%	0%	100%
Total Enrolled	0	1	0	3	0	6

Chabot
Success Rates By Gender and Semester
Course: PHYS 2B



	Fa 2007	Sp 2008	Fa 2008	Sp 2009	Fa 2009	Sp 2010
Men						
Success	0%	92%	0%	87%	0%	94%
Non-Success	0%	8%	0%	13%	0%	0%
Withdrawal	0%	0%	0%	0%	0%	6%
Total Percent	0%	100%	0%	100%	0%	100%
Total Enrolled	0	13	0	15	0	18
Women						
Success	0%	100%	0%	93%	0%	73%
Non-Success	0%	0%	0%	0%	0%	0%
Withdrawal	0%	0%	0%	7%	0%	27%
Total Percent	0%	100%	0%	100%	0%	100%
Total Enrolled	0	13	0	15	0	15