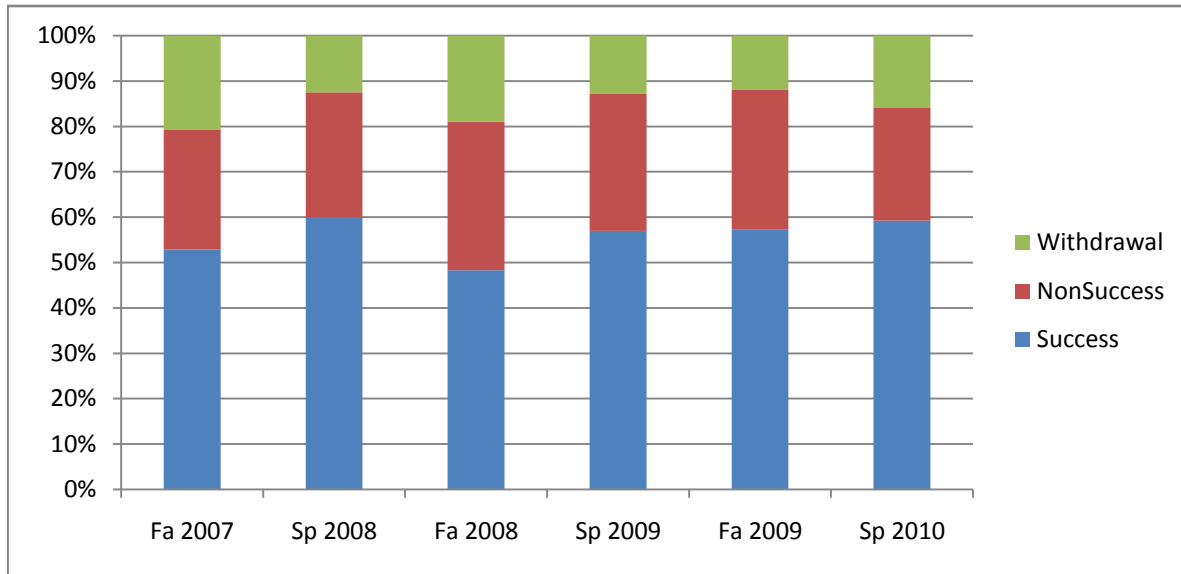
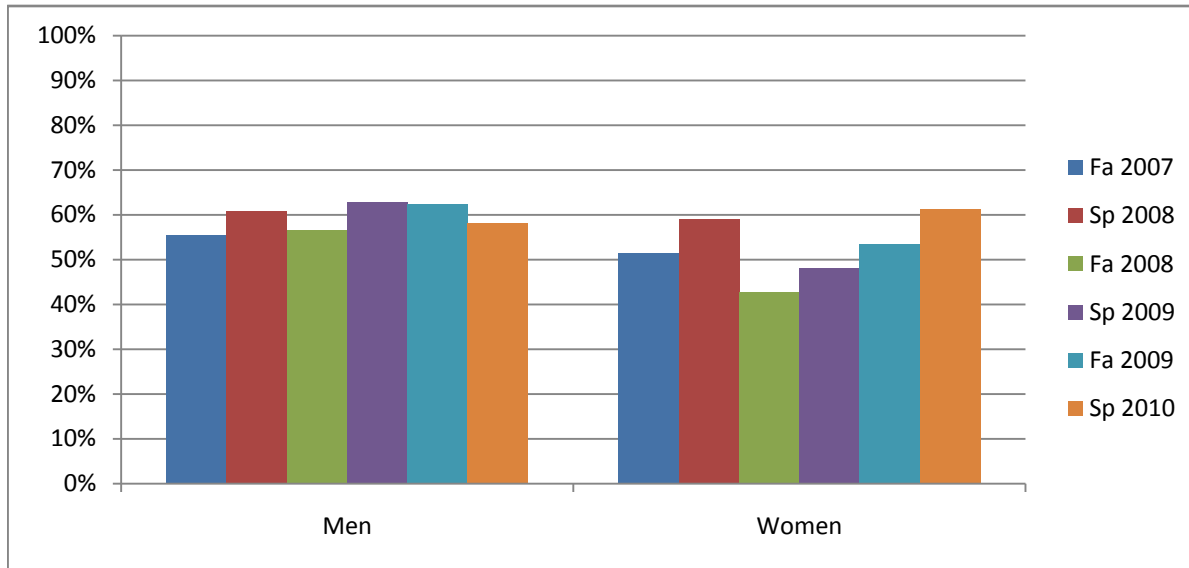


Chabot  
Success, Non-Success, and Withdrawal Rates By Semester  
Course: ADMJ 50



	Fa 2007	Sp 2008	Fa 2008	Sp 2009	Fa 2009	Sp 2010
Success	53%	60%	48%	57%	57%	59%
Non-Success	26%	28%	33%	30%	31%	25%
Withdrawal	21%	13%	19%	13%	12%	16%
Total Percent	100%	100%	100%	100%	100%	100%
Total Enrolled	<b>174</b>	<b>160</b>	<b>211</b>	<b>179</b>	<b>211</b>	<b>157</b>

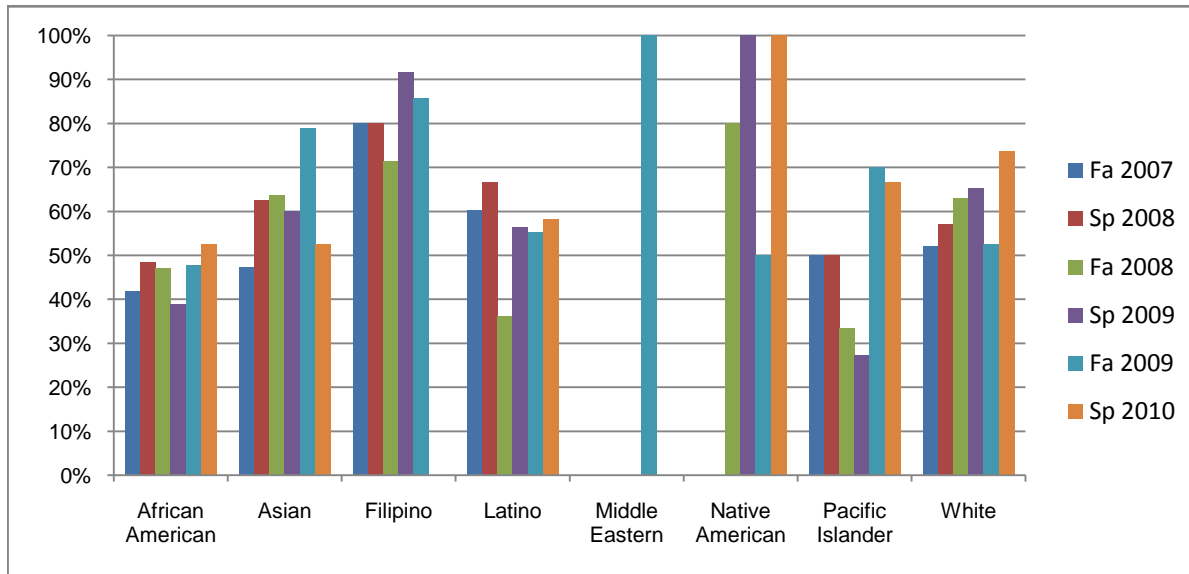
Chabot  
Success Rates By Gender and Semester  
Course: ADMJ 50



	Fa 2007	Sp 2008	Fa 2008	Sp 2009	Fa 2009	Sp 2010
<b>Men</b>						
Success	55%	61%	57%	63%	62%	58%
Non-Success	25%	26%	28%	26%	27%	31%
Withdrawal	20%	14%	15%	11%	10%	10%
Total Percent	100%	100%	100%	100%	100%	100%
Total Enrolled	<b>101</b>	<b>74</b>	<b>99</b>	<b>97</b>	<b>106</b>	<b>86</b>
<b>Women</b>						
Success	51%	59%	43%	48%	53%	61%
Non-Success	27%	29%	34%	37%	35%	16%
Withdrawal	21%	12%	23%	15%	12%	22%
Total Percent	100%	100%	100%	100%	100%	100%
Total Enrolled	<b>70</b>	<b>83</b>	<b>108</b>	<b>79</b>	<b>101</b>	<b>67</b>

# Ethnicity\_Totals\_Course

## Chabot Success Rates By Ethnicity and Semester Course: ADMJ 50



	Fa 2007	Sp 2008	Fa 2008	Sp 2009	Fa 2009	Sp 2010
<b>African American</b>						
Success	42%	48%	47%	39%	48%	53%
Non-Success	30%	30%	35%	47%	41%	25%
Withdrawal	28%	21%	18%	14%	11%	23%
Total Percent	100%	100%	100%	100%	100%	100%
Total Enrolled	<b>43</b>	<b>33</b>	<b>49</b>	<b>36</b>	<b>46</b>	<b>40</b>
<b>Asian</b>						
Success	47%	63%	64%	60%	79%	53%
Non-Success	26%	38%	27%	30%	11%	37%
Withdrawal	26%	0%	9%	10%	11%	11%
Total Percent	100%	100%	100%	100%	100%	100%
Total Enrolled	<b>19</b>	<b>16</b>	<b>22</b>	<b>20</b>	<b>19</b>	<b>19</b>
<b>Filipino</b>						
Success	80%	80%	71%	92%	86%	0%
Non-Success	0%	10%	29%	8%	14%	100%
Withdrawal	20%	10%	0%	0%	0%	0%
Total Percent	100%	100%	100%	100%	100%	100%
Total Enrolled	<b>5</b>	<b>10</b>	<b>7</b>	<b>12</b>	<b>7</b>	<b>2</b>
<b>Latino</b>						
Success	60%	67%	36%	56%	55%	58%
Non-Success	25%	24%	43%	31%	31%	26%
Withdrawal	15%	10%	20%	13%	14%	16%
Total Percent	100%	100%	100%	100%	100%	100%
Total Enrolled	<b>53</b>	<b>51</b>	<b>69</b>	<b>55</b>	<b>85</b>	<b>43</b>
<b>Middle Eastern</b>						
Success	0%	0%	0%	0%	100%	0%
Non-Success	0%	0%	0%	0%	0%	0%
Withdrawal	0%	0%	0%	0%	0%	0%

Ethnicity\_Totals\_Course

Total Percent	0%	0%	0%	0%	100%	0%
Total Enrolled	<b>0</b>	<b>0</b>	<b>0</b>	<b>0</b>	<b>1</b>	<b>0</b>
<b>Native American</b>						
Success	0%	0%	80%	100%	50%	100%
Non-Success	100%	100%	0%	0%	50%	0%
Withdrawal	0%	0%	20%	0%	0%	0%
Total Percent	100%	100%	100%	100%	100%	100%
Total Enrolled	<b>1</b>	<b>1</b>	<b>5</b>	<b>1</b>	<b>2</b>	<b>1</b>
<b>Pacific Islander</b>						
Success	50%	50%	33%	27%	70%	67%
Non-Success	30%	50%	50%	36%	30%	0%
Withdrawal	20%	0%	17%	36%	0%	33%
Total Percent	100%	100%	100%	100%	100%	100%
Total Enrolled	<b>10</b>	<b>4</b>	<b>6</b>	<b>11</b>	<b>10</b>	<b>3</b>
<b>White</b>						
Success	52%	57%	63%	65%	53%	74%
Non-Success	32%	21%	17%	19%	26%	18%
Withdrawal	16%	21%	20%	15%	21%	8%
Total Percent	100%	100%	100%	100%	100%	100%
Total Enrolled	<b>25</b>	<b>28</b>	<b>35</b>	<b>26</b>	<b>19</b>	<b>38</b>