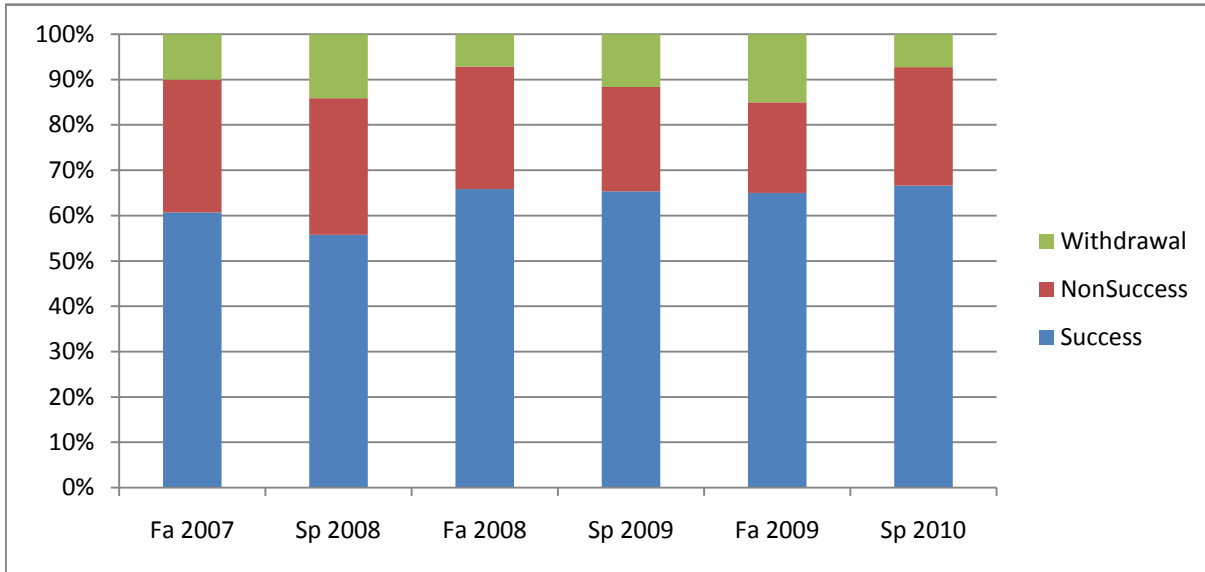


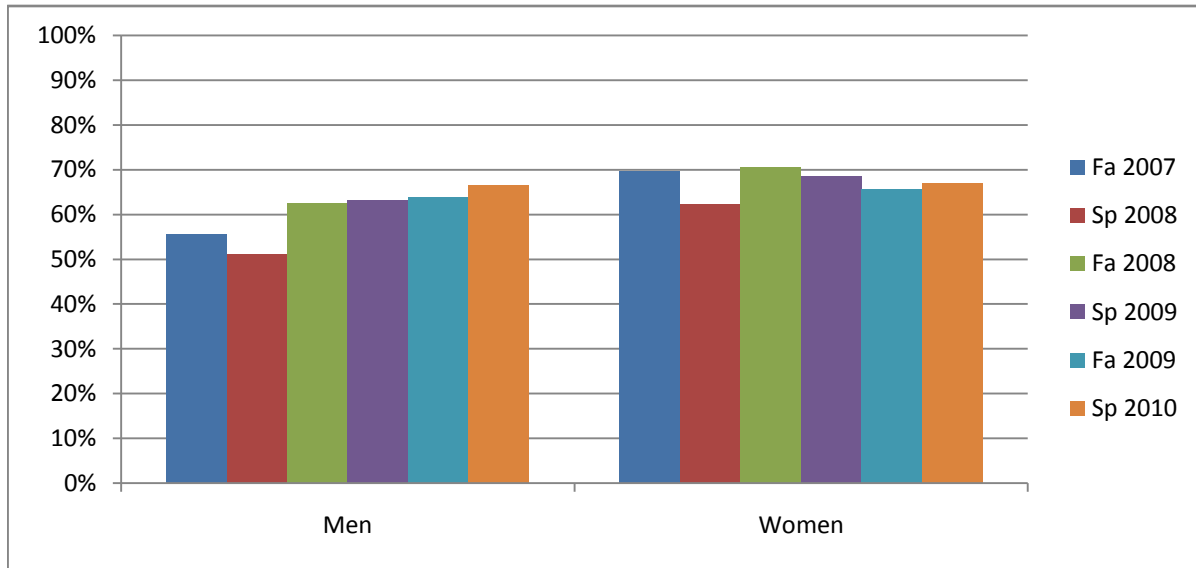
Chabot  
Success, Non-Success, and Withdrawal Rates By Semester  
Course: GEOG 1



	Fa 2007	Sp 2008	Fa 2008	Sp 2009	Fa 2009	Sp 2010
Success	61%	56%	66%	65%	65%	67%
Non-Success	29%	30%	27%	23%	20%	26%
Withdrawal	10%	14%	7%	12%	15%	7%
Total Percent	100%	100%	100%	100%	100%	100%
Total Enrolled	<b>389</b>	<b>348</b>	<b>433</b>	<b>413</b>	<b>366</b>	<b>440</b>

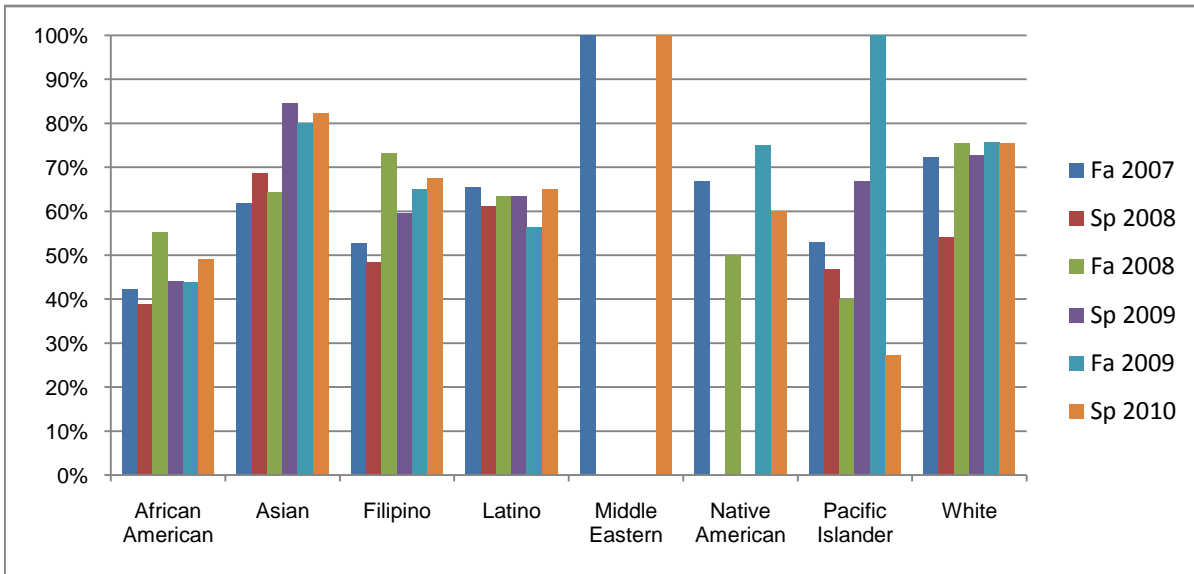
# Gender\_Totals\_Course

## Chabot Success Rates By Gender and Semester Course: GEOG 1



	Fa 2007	Sp 2008	Fa 2008	Sp 2009	Fa 2009	Sp 2010
<b>Men</b>						
Success	56%	51%	63%	63%	64%	67%
Non-Success	34%	35%	32%	24%	18%	26%
Withdrawal	10%	14%	5%	13%	18%	7%
Total Percent	100%	100%	100%	100%	100%	100%
Total Enrolled	<b>234</b>	<b>207</b>	<b>262</b>	<b>236</b>	<b>183</b>	<b>236</b>
<b>Women</b>						
Success	70%	62%	71%	68%	66%	67%
Non-Success	22%	22%	19%	21%	22%	26%
Withdrawal	9%	15%	10%	10%	12%	7%
Total Percent	100%	100%	100%	100%	100%	100%
Total Enrolled	<b>148</b>	<b>138</b>	<b>163</b>	<b>168</b>	<b>181</b>	<b>197</b>

Chabot  
Success Rates By Ethnicity and Semester  
Course: GEOG 1



	Fa 2007	Sp 2008	Fa 2008	Sp 2009	Fa 2009	Sp 2010
<b>African American</b>						
Success	42%	39%	55%	44%	44%	49%
Non-Success	47%	51%	35%	41%	39%	42%
Withdrawal	11%	10%	10%	15%	17%	9%
Total Percent	100%	100%	100%	100%	100%	100%
Total Enrolled	<b>45</b>	<b>49</b>	<b>78</b>	<b>68</b>	<b>41</b>	<b>57</b>
<b>Asian</b>						
Success	62%	68%	64%	85%	80%	82%
Non-Success	25%	22%	33%	10%	8%	14%
Withdrawal	13%	10%	3%	6%	12%	4%
Total Percent	100%	100%	100%	100%	100%	100%
Total Enrolled	<b>76</b>	<b>73</b>	<b>67</b>	<b>71</b>	<b>60</b>	<b>73</b>
<b>Filipino</b>						
Success	53%	48%	73%	59%	65%	67%
Non-Success	45%	38%	22%	24%	18%	30%
Withdrawal	3%	14%	5%	16%	18%	2%
Total Percent	100%	100%	100%	100%	100%	100%
Total Enrolled	<b>38</b>	<b>29</b>	<b>41</b>	<b>37</b>	<b>40</b>	<b>43</b>
<b>Latino</b>						
Success	65%	61%	63%	63%	56%	65%
Non-Success	24%	22%	28%	25%	27%	28%
Withdrawal	11%	16%	9%	12%	16%	7%
Total Percent	100%	100%	100%	100%	100%	100%
Total Enrolled	<b>101</b>	<b>85</b>	<b>109</b>	<b>104</b>	<b>110</b>	<b>140</b>
<b>Middle Eastern</b>						
Success	100%	0%	0%	0%	0%	100%
Non-Success	0%	0%	0%	0%	0%	0%
Withdrawal	0%	0%	0%	0%	0%	0%

Total Percent	100%	0%	0%	0%	0%	100%
Total Enrolled	<b>3</b>	<b>0</b>	<b>0</b>	<b>0</b>	<b>0</b>	<b>1</b>
<b>Native American</b>						
Success	67%	0%	50%	0%	75%	60%
Non-Success	33%	100%	50%	100%	0%	20%
Withdrawal	0%	0%	0%	0%	25%	20%
Total Percent	100%	100%	100%	100%	100%	100%
Total Enrolled	<b>6</b>	<b>1</b>	<b>2</b>	<b>1</b>	<b>4</b>	<b>5</b>
<b>Pacific Islander</b>						
Success	53%	47%	40%	67%	100%	27%
Non-Success	29%	40%	47%	17%	0%	64%
Withdrawal	18%	13%	13%	17%	0%	9%
Total Percent	100%	100%	100%	100%	100%	100%
Total Enrolled	<b>17</b>	<b>15</b>	<b>15</b>	<b>18</b>	<b>6</b>	<b>11</b>
<b>White</b>						
Success	72%	54%	75%	73%	76%	75%
Non-Success	21%	29%	19%	17%	11%	17%
Withdrawal	7%	17%	6%	10%	13%	7%
Total Percent	100%	100%	100%	100%	100%	100%
Total Enrolled	<b>72</b>	<b>63</b>	<b>81</b>	<b>77</b>	<b>70</b>	<b>81</b>