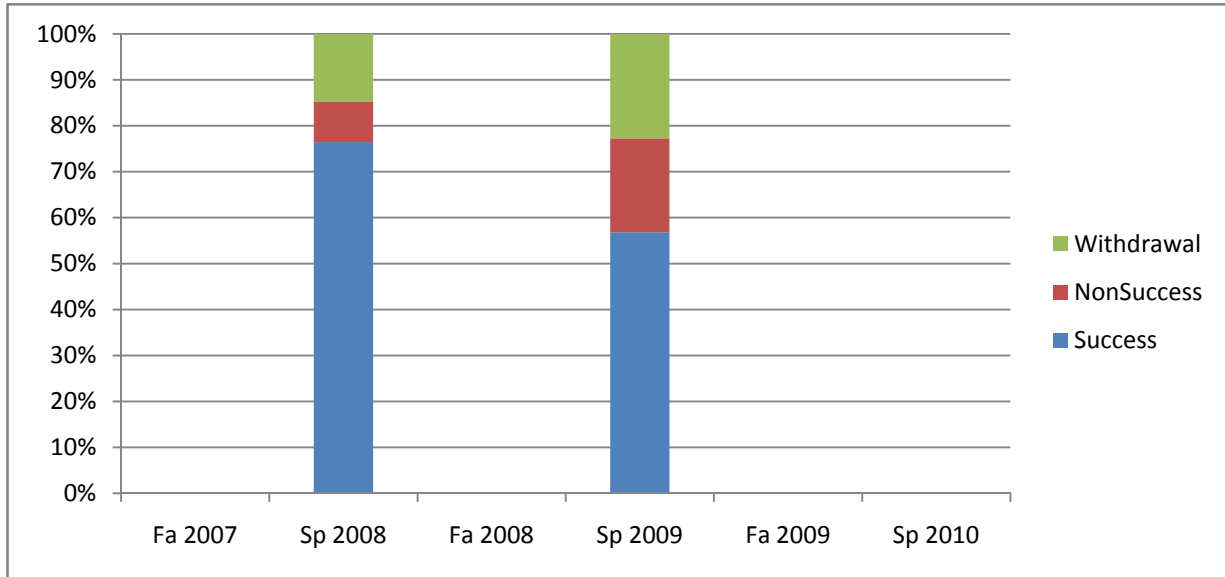
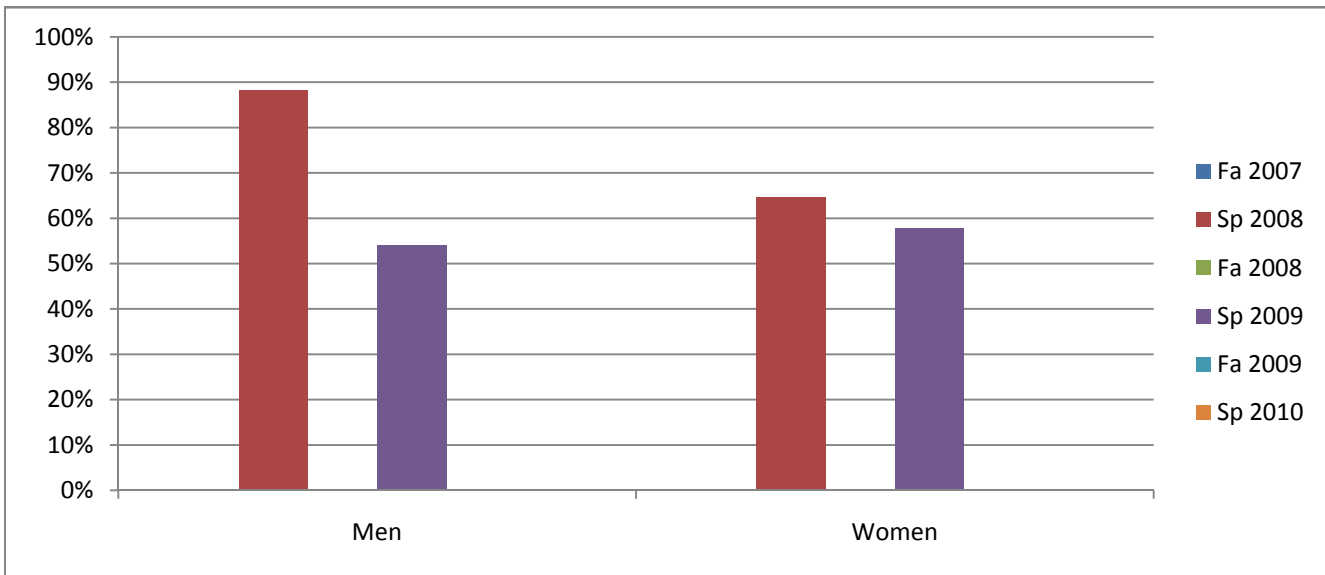


Chabot  
Success, Non-Success, and Withdrawal Rates By Semester  
Course: POLI 2



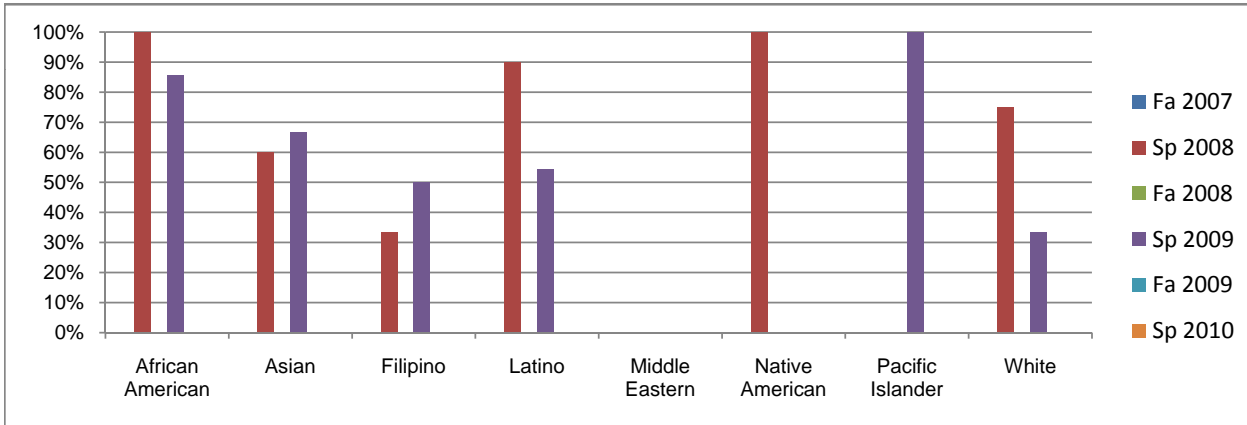
	Fa 2007	Sp 2008	Fa 2008	Sp 2009	Fa 2009	Sp 2010
Success	0%	76%	0%	57%	0%	0%
Non-Success	0%	9%	0%	20%	0%	0%
Withdrawal	0%	15%	0%	23%	0%	0%
Total Percent	0%	100%	0%	100%	0%	0%
Total Enrolled	<b>0</b>	<b>34</b>	<b>0</b>	<b>44</b>	<b>0</b>	<b>0</b>

Chabot  
Success Rates By Gender and Semester  
Course: POLI 2



	Fa 2007	Sp 2008	Fa 2008	Sp 2009	Fa 2009	Sp 2010
<b>Men</b>						
Success	0%	88%	0%	54%	0%	0%
Non-Success	0%	0%	0%	29%	0%	0%
Withdrawal	0%	12%	0%	17%	0%	0%
Total Percent	0%	100%	0%	100%	0%	0%
Total Enrolled	0	17	0	24	0	0
<b>Women</b>						
Success	0%	65%	0%	58%	0%	0%
Non-Success	0%	18%	0%	11%	0%	0%
Withdrawal	0%	18%	0%	32%	0%	0%
Total Percent	0%	100%	0%	100%	0%	0%
Total Enrolled	0	17	0	19	0	0

Chabot  
Success Rates By Ethnicity and Semester  
Course: POLI 2



	Fa 2007	Sp 2008	Fa 2008	Sp 2009	Fa 2009	Sp 2010
<b>African American</b>						
Success	0%	100%	0%	86%	0%	0%
Non-Success	0%	0%	0%	0%	0%	0%
Withdrawal	0%	0%	0%	14%	0%	0%
Total Percent	0%	100%	0%	100%	0%	0%
Total Enrolled	0	3	0	7	0	0
<b>Asian</b>						
Success	0%	60%	0%	67%	0%	0%
Non-Success	0%	20%	0%	22%	0%	0%
Withdrawal	0%	20%	0%	11%	0%	0%
Total Percent	0%	100%	0%	100%	0%	0%
Total Enrolled	0	5	0	9	0	0
<b>Filipino</b>						
Success	0%	33%	0%	50%	0%	0%
Non-Success	0%	67%	0%	25%	0%	0%
Withdrawal	0%	0%	0%	25%	0%	0%
Total Percent	0%	100%	0%	100%	0%	0%
Total Enrolled	0	3	0	4	0	0
<b>Latino</b>						
Success	0%	90%	0%	55%	0%	0%
Non-Success	0%	0%	0%	36%	0%	0%
Withdrawal	0%	10%	0%	9%	0%	0%
Total Percent	0%	100%	0%	100%	0%	0%
Total Enrolled	0	10	0	11	0	0
<b>Middle Eastern</b>						
Success	0%	0%	0%	0%	0%	0%
Non-Success	0%	0%	0%	0%	0%	0%
Withdrawal	0%	0%	0%	0%	0%	0%
Total Percent	0%	0%	0%	0%	0%	0%
Total Enrolled	0	0	0	0	0	0
<b>Native American</b>						
Success	0%	100%	0%	0%	0%	0%
Non-Success	0%	0%	0%	0%	0%	0%
Withdrawal	0%	0%	0%	100%	0%	0%
Total Percent	0%	100%	0%	100%	0%	0%
Total Enrolled	0	1	0	1	0	0
<b>Pacific Islander</b>						
Success	0%	0%	0%	100%	0%	0%
Non-Success	0%	0%	0%	0%	0%	0%
Withdrawal	0%	0%	0%	0%	0%	0%
Total Percent	0%	0%	0%	100%	0%	0%
Total Enrolled	0	0	0	1	0	0
<b>White</b>						
Success	0%	75%	0%	33%	0%	0%
Non-Success	0%	0%	0%	22%	0%	0%
Withdrawal	0%	25%	0%	44%	0%	0%
Total Percent	0%	100%	0%	100%	0%	0%
Total Enrolled	0	8	0	9	0	0