

Chabot College

Course success and withdrawal rates, by course enrollments and students

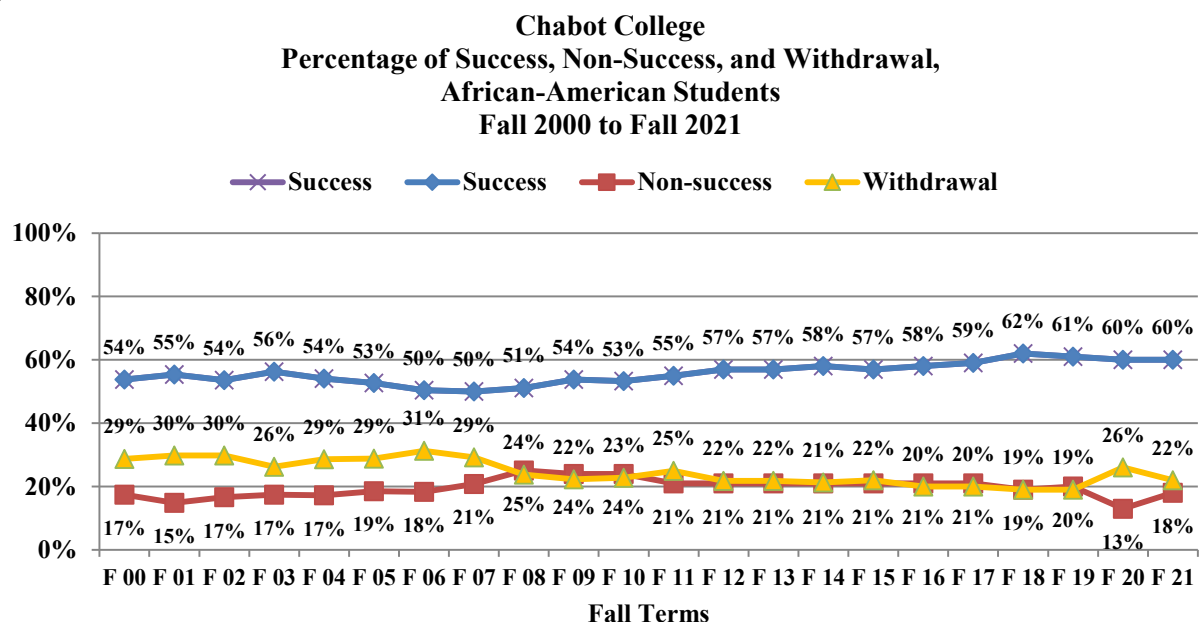
Fall 2000 to Fall 2021

African-American Students

Chabot African American students' success rate stayed at 60 percent in Fall 2021, an increase from an average of 50-55 percent in early 2000's. Withdrawal rates dropped from 29-30 percent in early 2000's to 19% in Fall 2019 and rose to 22 percent in Fall 2021. Non-success rates (D, F, No Credit, No Pass, or Incomplete) had dropped from an average of 17 percent during the early 2000's to 13 percent in Fall 2020, but rose to 18% in Fall 2021. The percentage of students who withdrew from all their courses fell from 16-20 percent in the early 2000's to 14 percent in Fall 2021. Compared to all students at Chabot, African American students had lower success rates and higher withdrawal rates.

By course enrollments					By students	
Semester	Number of Course Enrollments with Grades	Percentage of Course Enrollments			Number of Students Enrolled	Percentage of Students Who Withdrew from All courses
		Success (A,B,C, CR, P)	Non-success (D, F, NC, NP, I)	Withdrawal (W)		
Fall 2000	5,218	54%	17%	29%	1,950	18%
Fall 2001	5,248	55%	15%	30%	1,969	19%
Fall 2002	6,058	54%	17%	30%	2,190	17%
Fall 2003	5,493	56%	17%	26%	1,986	16%
Fall 2004	5,892	54%	17%	29%	2,109	17%
Fall 2005	5,899	53%	19%	29%	2,019	16%
Fall 2006	5,342	50%	18%	31%	1,922	20%
Fall 2007	5,943	50%	21%	29%	2,079	17%
Fall 2008	6,534	51%	25%	24%	2,284	14%
Fall 2009	7,435	54%	24%	22%	2,497	12%
Fall 2010	7,281	53%	24%	23%	2,416	13%
Fall 2011	6,025	55%	21%	25%	2,062	14%
Fall 2012	5,106	57%	21%	22%	1,787	14%
Fall 2013	5,154	57%	21%	22%	1,769	13%
Fall 2014	4,506	58%	21%	21%	1,627	13%
Fall 2015	4,383	57%	21%	22%	1,670	15%
Fall 2016	4,368	58%	21%	20%	1,579	12%
Fall 2017*	5,870	59%	21%	20%	2,148	13%
Fall 2018*	5,524	62%	19%	19%	2,078	12%
Fall 2019*	5,435	61%	20%	19%	1,960	12%
Fall 2020*	4,605	60%	13%	26%	1,714	15%
Fall 2021*	3,837	60%	18%	22%	1,548	14%

NOTE: *All students who check off "Black or African American" in CCCApply are counted, regardless of whether they also check an additional race or ethnicity.



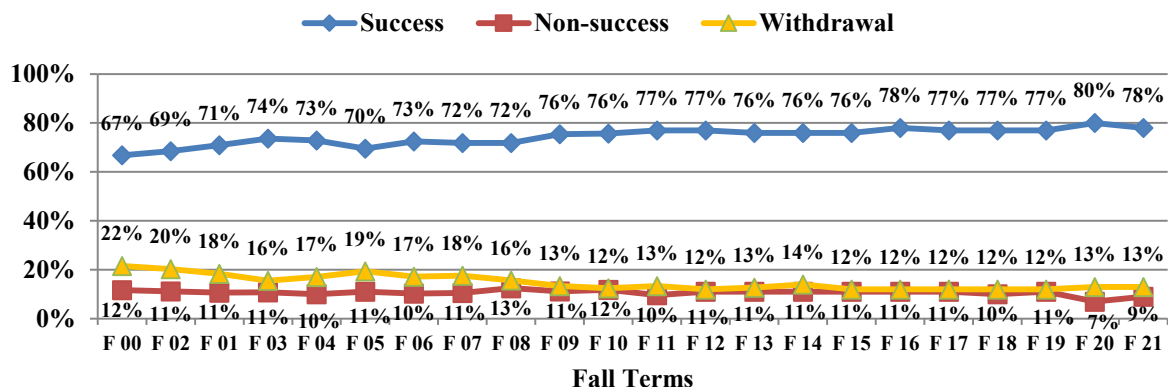
Chabot College
Course success and withdrawal rates, by course enrollments and students
Fall 2000 to Fall 2021
Asian-American Students

Chabot Asian American students' success rates have remained stable at 77 to 80 percent in the past five years, rising from an average of 67-70 percent in early 2000's. Withdrawal rates dropped from 20-22 percent in early 2000's to 12 to 13 percent in recent years. Non-success rates (D, F, No Credit, No Pass, or Incomplete) have dropped from an average of 11 percent during the early 2000's to 9 percent in Fall 2021. The percentage of students who withdrew from all their courses fell from 14-10 percent in the early 2000's to 7-9 percent in recent years. Compared to all students at Chabot, Asian American students had higher success rates and lower withdrawal rates.

Semester	By course enrollments				By students	
	Number of Course Enrollments with Grades	Percentage of Course Enrollments			Number of Students Enrolled	Percentage of Students Who Withdrew from All courses
		Success (A,B,C, CR, P)	Non-success (D, F, NC, NP, I)	Withdrawal (W)		
Fall 2000	6,675	67%	12%	22%	2,604	14%
Fall 2001	7,238	69%	11%	20%	2,840	12%
Fall 2002	7,894	71%	11%	18%	3,018	11%
Fall 2003	7,531	74%	11%	16%	2,742	10%
Fall 2004	7,456	73%	10%	17%	2,721	10%
Fall 2005	6,709	70%	11%	19%	2,526	10%
Fall 2006	6,579	73%	10%	17%	2,382	10%
Fall 2007	6,548	72%	11%	18%	2,437	11%
Fall 2008	6,726	72%	13%	16%	2,408	9%
Fall 2009	7,123	76%	11%	13%	2,624	7%
Fall 2010	7,326	76%	12%	12%	2,575	6%
Fall 2011	6,783	77%	10%	13%	2,323	8%
Fall 2012	6,390	77%	11%	12%	2,205	7%
Fall 2013	6,015	76%	11%	13%	2,142	7%
Fall 2014	5,861	76%	11%	14%	2,074	9%
Fall 2015	5,978	76%	11%	12%	2,203	7%
Fall 2016	6,164	78%	11%	12%	2,299	7%
Fall 2017*	7,496	77%	11%	12%	2,750	7%
Fall 2018*	7,537	77%	10%	12%	2,850	8%
Fall 2019*	7,264	77%	11%	12%	2,810	7%
Fall 2020*	6,351	80%	7%	13%	2,559	8%
Fall 2021*	5,705	78%	9%	13%	2,348	9%

NOTE: *All students who check off any Asian ethnicity (excluding "Asian Filipino") in CCCApply are counted, regardless of whether they also check an additional race or ethnicity.

Chabot College
Percentage of Success, Non-Success, and Withdrawal, Asian-American Students
Fall 2000 to Fall 2021



Chabot College

Course success and withdrawal rates, by course enrollments and students

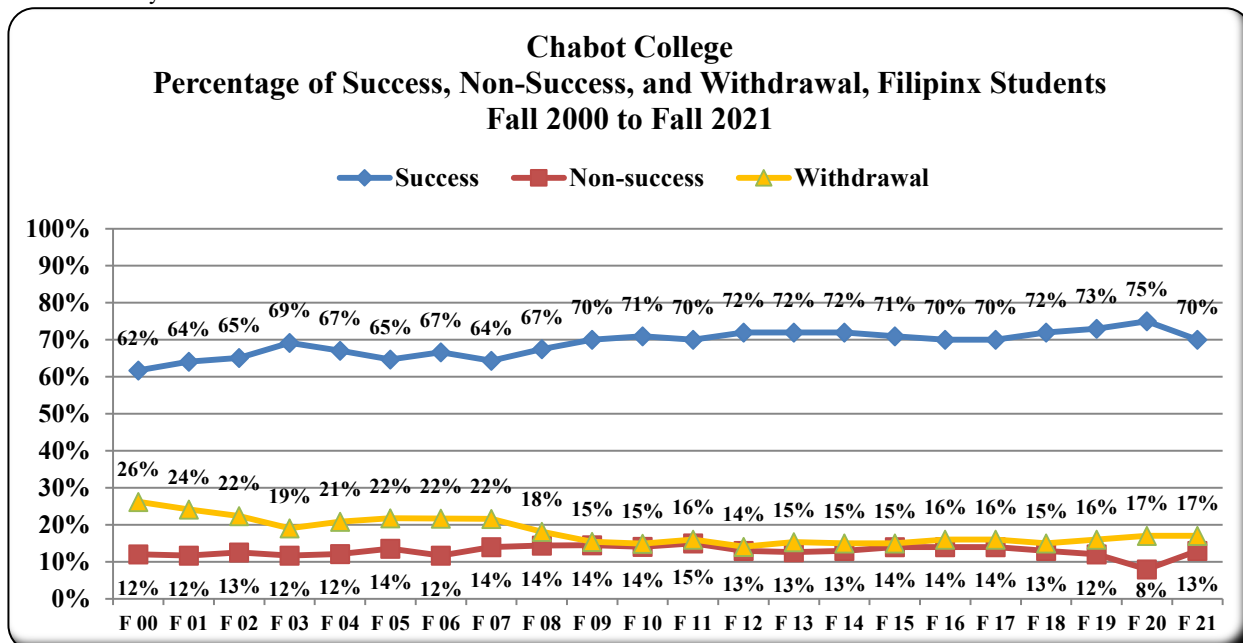
Fall 2000 to Fall 2021

Filipinx Students

Chabot Filipinx students' success rates have been at 70-75 percent in the past ten years, rising from an average of 62-65 percent in early 2000's. Withdrawal rates dropped from 24-26 percent in early 2000's to 15-17 percent in recent years. Non-success rates (D, F, No Credit, No Pass, or Incomplete) have remained relatively stable between 12% and 14% in the past twenty years, down to 8% in Fall 2020 and rose to 13% in Fall 2021. The percentage of students who withdrew from all their courses fell from 17 percent in Fall 2000 to 8-11 percent in recent years. Compared to all students at Chabot, Filipino students had slightly higher success rates and lower non-success rates.

Semester	Number of Course Enrollments with Grades	By course enrollments			By students	
		Percentage of Course Enrollments			Number of Students Enrolled	Percentage of Students Who Withdrew from All courses
		Success (A,B,C, CR, P)	Non-success (D, F, NC, NP, I)	Withdrawal (W)		
Fall 2000	3,301	62%	12%	26%	1,273	17%
Fall 2001	3,548	64%	12%	24%	1,376	14%
Fall 2002	4,078	65%	13%	22%	1,520	14%
Fall 2003	3,945	69%	12%	19%	1,452	11%
Fall 2004	3,936	67%	12%	21%	1,472	12%
Fall 2005	3,829	65%	14%	22%	1,371	11%
Fall 2006	3,787	67%	12%	22%	1,336	12%
Fall 2007	3,943	64%	14%	22%	1,454	12%
Fall 2008	3,902	67%	14%	18%	1,397	10%
Fall 2009	3,959	70%	14%	15%	1,398	9%
Fall 2010	4,001	71%	14%	15%	1,360	7%
Fall 2011	3,262	70%	15%	16%	1,119	9%
Fall 2012	3,063	72%	13%	14%	1,024	8%
Fall 2013	3,098	72%	13%	15%	1,058	8%
Fall 2014	3,017	72%	13%	15%	1,057	9%
Fall 2015	3,126	71%	14%	15%	1,123	8%
Fall 2016	3,043	70%	14%	16%	1,123	10%
Fall 2017*	4,556	70%	14%	16%	1,639	10%
Fall 2018*	4,690	72%	13%	15%	1,684	9%
Fall 2019*	4,283	73%	12%	16%	1,592	9%
Fall 2020*	4,040	75%	8%	17%	1,525	11%
Fall 2021*	3,665	70%	13%	17%	1,409	11%

NOTE: *All students who check off "Asian Filipino" in CCCApply are counted, regardless of whether they also check an additional race or ethnicity.



Chabot College

Course success and withdrawal rates, by course enrollments and students

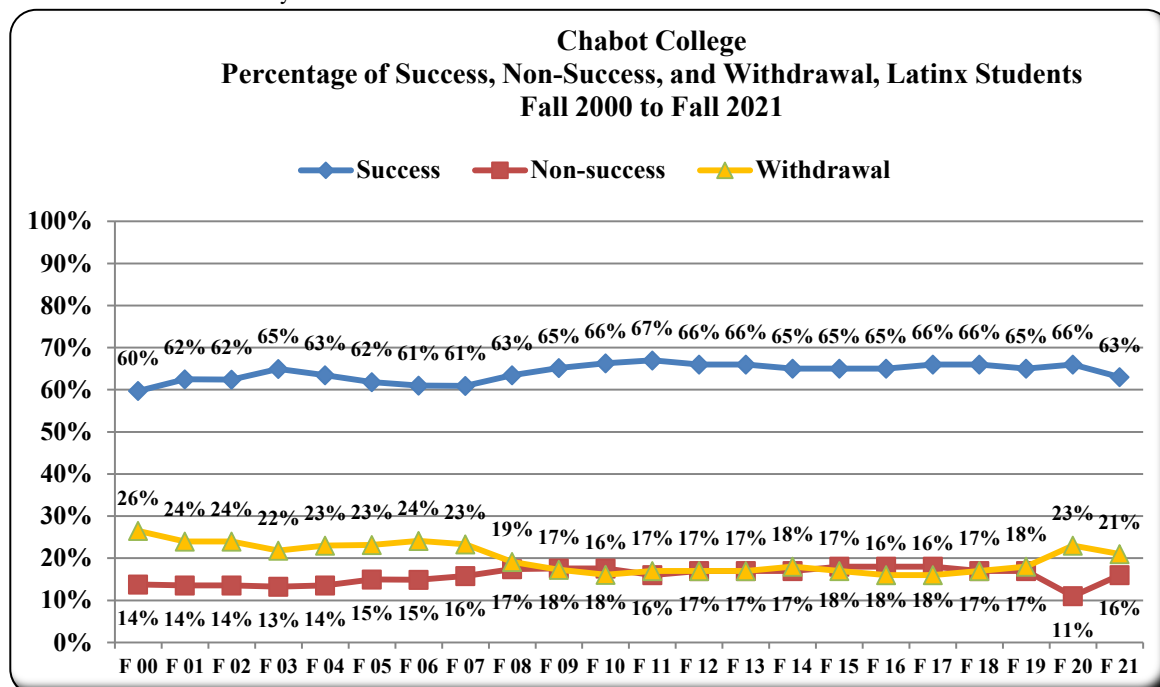
Fall 2000 to Fall 2021

Latinx Students

Chabot Latinx students' success rates have remained stable at 63-66 percent in the past ten years, rising from an average of 60-62 percent in early 2000's. Withdrawal rates dropped from 24-26 percent in early 2000's to 16-18 percent in recent years and increased to 21 percent in Fall 2021. Non-success rates (D, F, No Credit, No Pass, or Incomplete) have gone up slightly from an average of 14 percent during the early 2000's to 18% in recent years and then to 16 percent in Fall 2021. The percentage of students who withdrew from all their courses fell from 17 percent in Fall 2000 to 13 percent in Fall 2021. Compared to all students at Chabot, Latinx students had slightly lower success rates and higher non-success rates.

Semester	By course enrollments				By students	
	Number of Course Enrollments with Grades	Percentage of Course Enrollments			Number of Students Enrolled	Percentage of Students Who Withdrew from All courses
		Success (A,B,C, CR, P)	Non-success (D, F, NC, NP, I)	Withdrawal (W)		
Fall 2000	6,860	60%	14%	26%	2,738	17%
Fall 2001	7,282	62%	14%	24%	2,901	14%
Fall 2002	8,431	62%	14%	24%	3,297	14%
Fall 2003	8,583	65%	13%	22%	3,289	13%
Fall 2004	8,569	63%	14%	23%	3,273	13%
Fall 2005	8,454	62%	15%	23%	3,243	14%
Fall 2006	8,283	61%	15%	24%	3,094	14%
Fall 2007	8,790	61%	16%	23%	3,405	14%
Fall 2008	9,624	63%	17%	19%	3,927	9%
Fall 2009	11,427	65%	18%	17%	4,256	9%
Fall 2010	12,280	66%	18%	16%	4,355	9%
Fall 2011	12,547	67%	16%	17%	4,615	10%
Fall 2012	12,427	66%	17%	17%	4,632	10%
Fall 2013	12,879	66%	17%	17%	4,810	11%
Fall 2014	12,977	65%	17%	18%	4,905	10%
Fall 2015	14,041	65%	18%	17%	5,373	10%
Fall 2016	14,694	65%	18%	16%	5,578	9%
Fall 2017*	14,712	66%	18%	16%	5,760	9%
Fall 2018*	14,665	66%	17%	17%	5,860	10%
Fall 2019*	15,000	65%	17%	18%	5,774	10%
Fall 2020*	13,451	66%	11%	23%	5,321	14%
Fall 2021*	11,938	63%	16%	21%	4,974	13%

NOTE: *All students who check off any Latinx ethnicity in CCCApply are counted, regardless of whether they also check an additional race or ethnicity.



Chabot College

Course success and withdrawal rates, by course enrollments and students

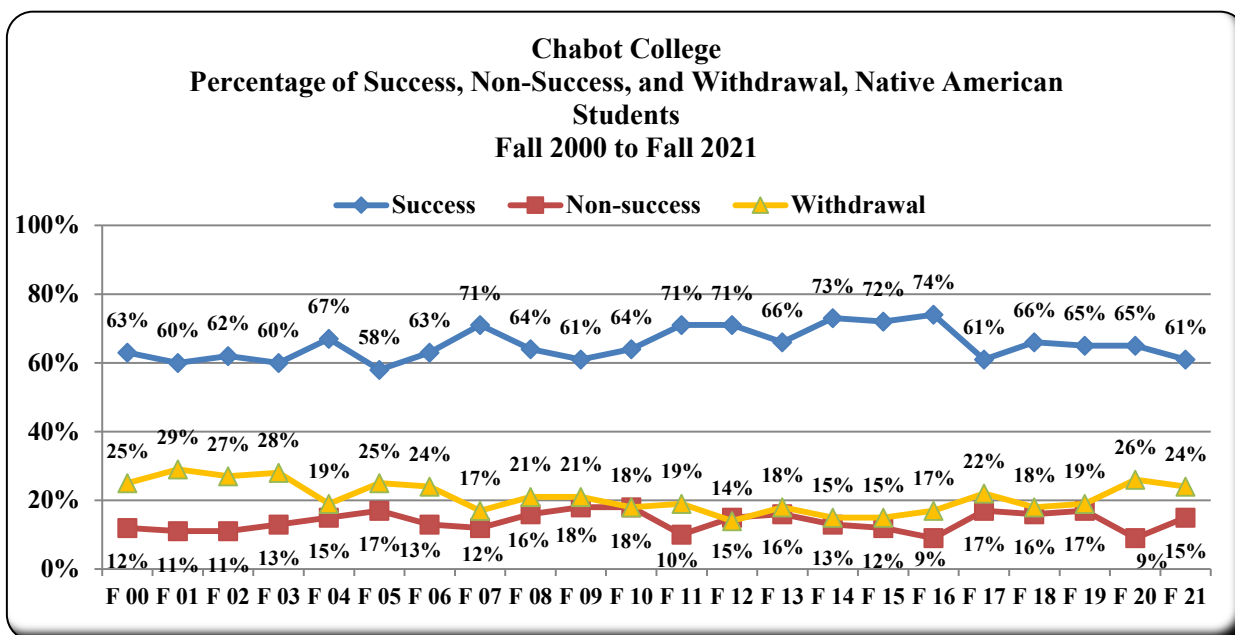
Fall 2000 to Fall 2021

Native American Students

Chabot Native American students' success rates have varied between 60 and 74 percent in the past twenty years. Withdrawal rates dropped from 25-29 percent in early 2000's to 17% in Fall 2019 and then increased to 24 percent in Fall 2021. Non-success rates (D, F, No Credit, No Pass, or Incomplete) dropped from an average of 13 percent during the early 2000's to 9 percent in Fall 2020 and increased to 15% in Fall 2021. The percentage of students who withdrew from all their courses fell from an average 18 percent in the early 2000's to 10-15 percent in recent years and up to 16 percent in Fall 2021. Compared to all students at Chabot, Native American students had slightly lower success rates and higher non-success rates.

Semester	By course enrollments				By students	
	Number of Course Enrollments with Grades	Percentage of Course Enrollments			Number of Students Enrolled	Percentage of Students Who Withdrew from All courses
		Success (A,B,C, CR, P)	Non-success (D, F, NC, NP, I)	Withdrawal (W)		
Fall 2000	310	63%	12%	25%	123	20%
Fall 2001	300	60%	11%	29%	122	22%
Fall 2002	312	62%	11%	27%	130	21%
Fall 2003	309	60%	13%	28%	117	18%
Fall 2004	323	67%	15%	19%	119	13%
Fall 2005	330	58%	17%	25%	111	13%
Fall 2006	376	63%	13%	24%	129	18%
Fall 2007	308	71%	12%	17%	102	12%
Fall 2008	354	64%	16%	21%	119	10%
Fall 2009	296	61%	18%	21%	116	13%
Fall 2010	249	64%	18%	18%	84	12%
Fall 2011	129	71%	10%	19%	48	8%
Fall 2012	87	71%	15%	14%	36	8%
Fall 2013	94	66%	16%	18%	35	11%
Fall 2014	96	73%	13%	15%	32	13%
Fall 2015	97	72%	12%	15%	36	14%
Fall 2016	78	74%	9%	17%	34	15%
Fall 2017*	1,359	61%	17%	22%	526	13%
Fall 2018*	1,398	66%	16%	18%	546	10%
Fall 2019*	1,287	65%	17%	19%	485	12%
Fall 2020*	1,113	65%	9%	26%	443	19%
Fall 2021*	989	61%	15%	24%	428	16%

NOTE: *All students who check off "American Indian" or "Alaskan Native" in CCCApply are counted, regardless of whether they also check an additional race or ethnicity.



Chabot College

Course success and withdrawal rates, by course enrollments and students

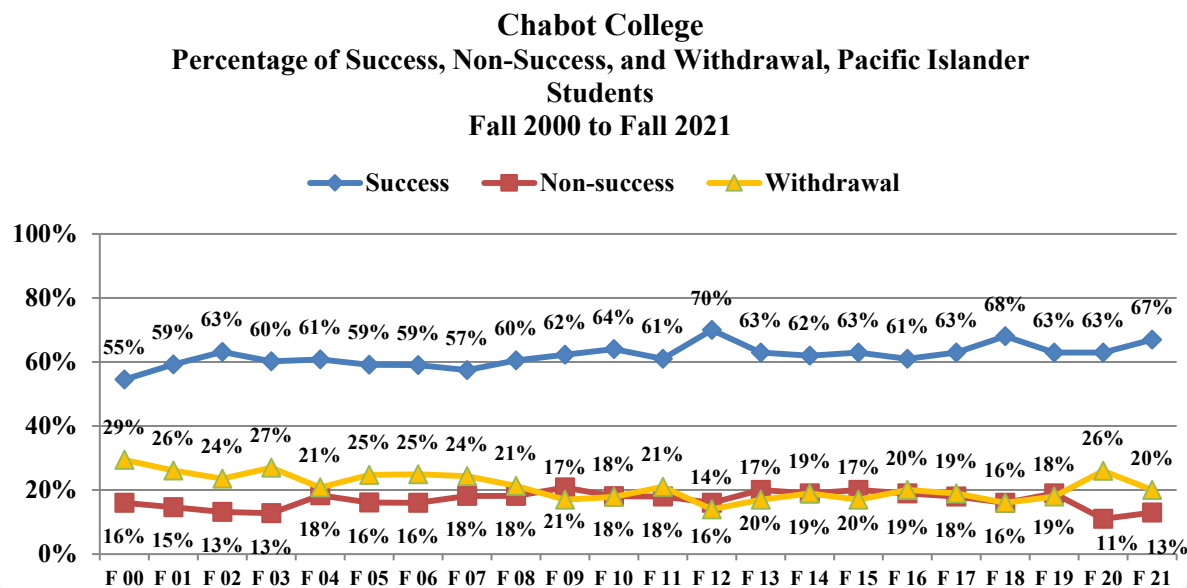
Fall 2000 to Fall 2021

Pacific Islander Students

Chabot Pacific Islander students' course success rates rose from 55 percent in Fall 2000 to 67 percent in Fall 2021. Withdrawal rates dropped from 26-29 percent in early 2000's to 16-20 percent in recent years and increased to 26 percent in Fall 2020, dropping down to 20 percent in Fall 2021. Non-success rates (D, F, No Credit, No Pass, or Incomplete) have gone up from an average of 15 percent during the early 2000's to 21 percent in Fall 2009 and then dropped to 13 percent in Fall 2021. The percentage of students who withdrew from all their courses were at an average of 14 percent in the early 2000's to 9-17 percent in recent years and 13 percent in Fall 2021. Compared to all students at Chabot, Pacific Islander students had lower success rates and higher withdrawal rates.

Semester	By course enrollments				By students	
	Number of Course Enrollments with Grades	Percentage of Course Enrollments			Number of Students Enrolled	Percentage of Students Who Withdrew from All courses
		Success (A,B,C, CR, P)	Non-success (D, F, NC, NP, I)	Withdrawal (W)		
Fall 2000	866	55%	16%	29%	306	16%
Fall 2001	878	59%	15%	26%	308	15%
Fall 2002	953	63%	13%	24%	327	16%
Fall 2003	836	60%	13%	27%	297	15%
Fall 2004	902	61%	18%	21%	323	10%
Fall 2005	1,059	59%	16%	25%	361	14%
Fall 2006	1,050	59%	16%	25%	367	14%
Fall 2007	1,082	57%	18%	24%	378	11%
Fall 2008	1,166	60%	18%	21%	394	13%
Fall 2009	1,078	62%	21%	17%	379	9%
Fall 2010	1,170	64%	18%	18%	384	8%
Fall 2011	787	61%	18%	21%	286	12%
Fall 2012	766	70%	16%	14%	286	10%
Fall 2013	702	63%	20%	17%	264	11%
Fall 2014	597	62%	19%	19%	225	14%
Fall 2015	641	63%	20%	17%	244	10%
Fall 2016	608	61%	19%	20%	230	13%
Fall 2017*	1,424	63%	18%	19%	550	11%
Fall 2018*	1,586	68%	16%	16%	579	9%
Fall 2019*	1,554	63%	19%	18%	556	11%
Fall 2020*	1,331	63%	11%	26%	504	17%
Fall 2021*	1,191	67%	13%	20%	445	13%

NOTE: *All students who check off any Pacific Islander ethnicity in CCCApply are counted, regardless of whether they also check an additional race or ethnicity.



Chabot College

Course success and withdrawal rates, by course enrollments and students

Fall 2000 to Fall 2021

White Students

Chabot White students' success rates have remained stable at 73-77 percent in the past eleven years, rising from an average of 72 percent in early 2000's. Withdrawal rates dropped from 18-23 percent in early 2000's to 16 percent in Fall 2021. Non-success rates (D, F, No Credit, No Pass, or Incomplete) had dropped slightly from an average of 9 percent during the early 2000's to 8 percent in Fall 2020, but rose to 12 percent in Fall 2021. The percentage of students who withdrew from all their courses maintained an average of 9-10 percent in recent years and was at 11 percent in Fall 2021. Compared to all students at Chabot, White students had higher success rates and lower non-success rates.

Semester	By course enrollments				By students	
	Number of Course Enrollments with Grades	Percentage of Course Enrollments			Number of Students Enrolled	Percentage of Students Who Withdrew from All courses
		Success (A,B,C, CR, P)	Non-success (D, F, NC, NP, I)	Withdrawal (W)		
Fall 2000	10,627	67%	10%	23%	4,491	15%
Fall 2001	10,351	70%	9%	20%	4,754	12%
Fall 2002	10,898	69%	9%	21%	4,939	13%
Fall 2003	10,138	73%	9%	18%	4,390	11%
Fall 2004	9,641	73%	8%	19%	4,181	11%
Fall 2005	8,620	71%	10%	19%	3,619	10%
Fall 2006	8,030	73%	9%	18%	3,429	11%
Fall 2007	7,848	72%	10%	18%	3,249	10%
Fall 2008	7,684	72%	11%	17%	3,298	10%
Fall 2009	8,244	74%	12%	14%	3,481	9%
Fall 2010	8,270	75%	11%	14%	3,360	8%
Fall 2011	6,723	77%	10%	14%	2,640	10%
Fall 2012	5,948	76%	10%	14%	2,401	9%
Fall 2013	6,053	76%	11%	13%	2,462	9%
Fall 2014	5,646	75%	11%	14%	2,412	10%
Fall 2015	5,524	76%	11%	13%	2,422	10%
Fall 2016	5,212	75%	11%	15%	2,358	10%
Fall 2017*	9,947	73%	12%	15%	4,218	10%
Fall 2018*	9,716	74%	12%	14%	4,233	9%
Fall 2019*	9,046	74%	12%	14%	3,855	9%
Fall 2020*	8,656	74%	8%	19%	3,811	12%
Fall 2021*	7,405	72%	12%	16%	3,527	11%

NOTE: *All students who check off "White" in CCCApply are counted, regardless of whether they also check an additional race or ethnicity.

