

CHABOT COLLEGE
Office of Institutional Research

Institutional Research Presentation to the Student Equity and Success Coordinating Group
Latest student equity data
February 11, 2009

- I. Student characteristics: Fall 2008
- II. English and math assessment recommendations of new students by race-ethnicity
- III. Fall to Spring persistence rates of new Chabot students by race-ethnicity
- IV. Success rates in basic skills English:
 - i. Overall, African American, and Latino students
- V. Persistence rates from basic skills English to college-level English:
 - i. Overall, African American, and Latino students
- VI. Success rates in basic skills math:
 - i. Overall, African American, and Latino students
- VII. Persistence rates from basic skills math to college-level math:
 - i. Overall, African American, and Latino students
- VIII. Transfer-directed and Transfer ready rates of Chabot students by race-ethnicity

Chabot College Student Characteristics Fall 2008 Preliminary Census

			Number	Percent				
			Total Students	14,461	100%			
Gender			Student Type			Enrollment Pattern		
Female	8,087	56%	Full-time			Day only	7,686	53%
Male	6,024	42%	12 or more units	4,384	30%	Both Day and Eve/Sat	3,604	25%
Unknown	350	2%	Part-time			Evening or Eve/Sat	2,766	19%
			6 to 11.5 units	4,561	32%	Saturday only	342	2%
			.5 to 5.5 units	5,422	37%	Independently Scheduled	63	<1%
			Non-credit units only	94	1%			
Race-ethnicity			Enrollment Status			Educational Goal		
African-American	2,232	15%	First time any college	2,657	18%	Transfer		
Asian-American	2,386	16%	First time transfer	1,421	10%	(with/without AA/AS)	5,083	46%
Filipino	1,384	10%	Returning transfer	1,517	10%	AA/AS only		
Latino	3,524	24%	Returning	256	2%	(not transfer)	1,063	10%
Middle Eastern	51	<1%	Continuing	8,278	57%	Occupational certificate		
Native American	111	1%	In High School	330	2%	or job training	1,555	14%
Pacific Islander	392	3%	Unknown	2	<1%	Personal development		
White	3,039	21%				(intellectual/cultural,		
Other	258	2%				basic skills, GED)	885	8%
Unknown	1,084	7%				Other or Undecided	2,467	22%
			Student Educational Level			Total	11,053	100%
Citizenship			In High School	514	4%	Unknown	3,408	24%
U.S. Citizen	12,224	85%	Freshman (< 30 units)	8,182	57%	New Students: High school districts		
Permanent Resident	1,582	11%	Sophomore (30-59 un.)	2,236	15%	Chabot College Districts	1,391	52%
Student Visa	115	1%	Other undergraduate	1,287	9%	<i>Castro Valley</i>	135	5%
Other	536	4%	AA/AS degree	850	6%	<i>Hayward</i>	530	20%
Unknown	4	<1%	BA/BS or higher deg.	1,392	10%	<i>New Haven</i>	249	9%
						<i>San Leandro</i>	166	6%
Age			Official residence			<i>San Lorenzo</i>	291	11%
19 or younger	3,608	25%	District Resident	9,879	68%	<i>Moreau</i>	20	1%
20-21	2,262	16%	Other CA Districts	4,275	30%	Dublin/Livermore/Pleas	53	2%
22-24	2,136	15%	Other States	139	1%	Other Alameda County	218	8%
25-29	1,990	14%	Other Countries	168	1%	Other Bay Area	131	5%
30-39	1,845	13%	Note: Cities in the District include Castro Valley, Hayward, San Leandro, San Lorenzo, and Union City.			Other California	649	24%
40-49	1,180	8%				Other States	85	3%
50 or older	1,440	10%				Other Countries	130	5%
						Total new students:	2,657	100%
Local residence: Cities with over 100 students						Transfer students: Previous college		
Hayward	4,452	31%	San Lorenzo	806	6%	CA Community College	1,642	56%
San Leandro	1,972	14%	Newark	317	2%	California State Univ.	364	12%
Union City	1,511	10%	Alameda	186	1%	University of California	113	4%
Fremont	1,044	7%	Pleasanton	130	1%	CA private colleges	140	5%
Castro Valley	1,027	7%	Livermore	128	1%	Out of state	261	9%
Oakland	988	7%	Dublin	117	1%	Out of country	184	6%
			Other local cities	1,783	12%	Unknown	234	8%
						Total transfers:	2,938	100%

SOURCE: Chabot-Las Positas Institutional Research Dataset, Fall Census, preliminary count as of 10/23/2008.

Chabot College
English Assessment Recommendations
New Students in Fall 2008
Test Date: 3/1/2008 through 8/31/2008
All who Took English Test and Registered for Classes (including NGRs)
Results by Race-Ethnicity (% of column)

	Chabot College																Total	
	New Students																	
	Fall 2008																	
	African Am.		Asian		Filipino		Latino		Pacific Islander		White		Other		Unknown			
	Num	Pct	Num	Pct	Num	Pct	Num	Pct	Num	Pct	Num	Pct	Num	Pct	Num	Pct	Num	Pct
College Level: Engl 1A/52	16	6%	43	17%	32	16%	65	12%	9	15%	75	30%	5	9%	21	19%	266	15%
1 Below: Engl 101A/102	211	77%	174	69%	151	77%	416	78%	46	74%	164	65%	51	88%	84	76%	1,297	75%
2 Below: Engl 116 - Learning Skills	47	17%	13	5%	9	5%	27	5%	4	6%	11	4%	1	2%	2	2%	114	7%
3 Below: Take ESL Test			24	9%	4	2%	22	4%	3	5%	1	0%	1	2%	4	4%	59	3%
Total	274	100%	254	100%	196	100%	530	100%	62	100%	251	100%	58	100%	111	100%	1,736	100%

Chabot College
Math Assessment Recommendations
New Students in Fall 2008
Test Date: 3/1/2008 - 8/31/2008
All who took Math test and registered for classes (including NGRs)
Results by Race-Ethnicity (% of column)

Chabot College																		
Fall 2008																		
New Students																		
	African Am.		Asian		Filipino		Latino		Pacific Islander		White		Other		Unknown		Total	
	Num	Pct	Num	Pct	Num	Pct	Num	Pct	Num	Pct	Num	Pct	Num	Pct	Num	Pct	Num	Pct
College Level: Trig or above	10	4%	110	42%	50	26%	71	13%	8	13%	50	20%	9	16%	24	21%	332	19%
1 Below: 55/55A Intermediate Algebra	58	21%	72	28%	79	41%	158	29%	28	45%	66	26%	15	26%	28	25%	504	29%
2 Below: 65/65A Elementary Algebra	135	48%	61	24%	47	24%	229	42%	19	31%	114	46%	27	47%	45	39%	677	38%
3 Below: Math 105 Basic Math	76	27%	16	6%	17	9%	90	16%	7	11%	20	8%	7	12%	17	15%	250	14%
Total	279	100%	259	100%	193	100%	548	100%	62	100%	250	100%	58	100%	114	100%	1,763	100%

Chabot College Office of Institutional Research
 Math new student recs f2008.bqy
 Tuesday, February 17, 2009

Chabot College
Persistence rates of new students
by gender and race-ethnicity
Fall 1997 to Spring 1998 through Fall 2007 to Spring 2008
New students

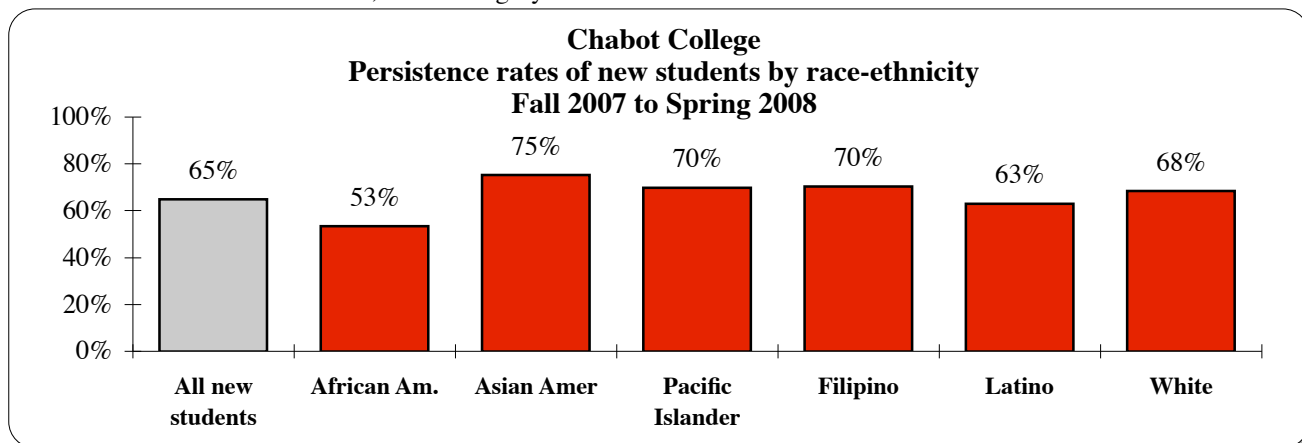
Persistence rates measure the proportion of students in one term who continue to enroll in college from one term to the next. Term to term persistence rates are defined as the percentage of students enrolled as of Census Day in the first term who are subsequently enrolled as of Census Day in the following term.

Usually, almost two thirds of new students in the Fall persist to the Spring semester. In Fall 2007, the persistence rate of new students was 65 percent, which is a one percentage point increase from the previous year. Students in most of the race-ethnicity groups were near or above this average. However, in Fall 2007, African-American students had persistence rates that were 12 percentage points lower than the average rate.

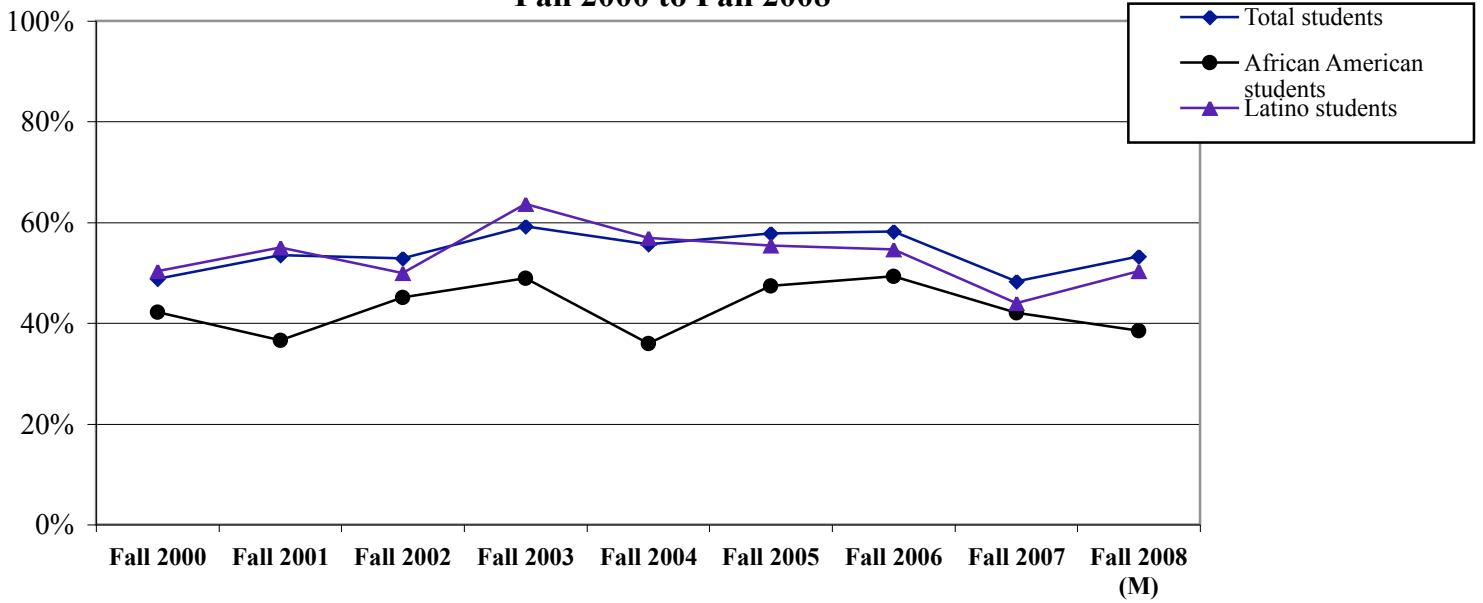
Persistence rates of new students

	All New Stds.	Gender		Race-ethnicity								
		Female	Male	African Amer.	Asian Amer.	Pacific Islander	Filipino	Latino	Native Amer.	Middle Eastern	White	Other
Fall enrollments												
Fall 97	2,159	1,120	981	354	308	55	165	449	21	21	677	109
Fall 98	1,933	954	927	314	309	65	141	424	28	26	521	105
Fall 99	2,256	1,127	1,073	398	345	65	151	524	24	35	598	116
Fall 00	2,086	1,031	1,010	303	351	64	182	513	20	25	500	128
Fall 01	2,505	1,291	1,111	326	397	65	195	529	27	31	788	147
Fall 02	2,499	1,309	1,106	320	381	70	197	636	*	37	710	133
Fall 03	2,334	1,179	1,094	346	395	47	210	658	*	23	528	112
Fall 04	2,771	1,425	1,264	429	400	85	238	734	21	26	628	210
Fall 05	2,862	1,447	1,332	482	411	97	261	755	24	*	581	243
Fall 06	2,650	1,277	1,288	431	394	83	215	722	30	*	533	237
Fall 07	2,650	1,307	1,280	462	380	76	222	801	*	*	444	242
Fall to Spring persistence rates												
F97/S98	63%	66%	62%	58%	75%	64%	67%	65%	62%	57%	59%	62%
F98/S99	64%	66%	62%	53%	73%	58%	65%	60%	61%	77%	67%	67%
F99/S00	63%	63%	63%	52%	75%	57%	72%	57%	50%	77%	67%	59%
F00/S01	64%	68%	62%	52%	76%	61%	69%	63%	70%	60%	63%	67%
F01/S02	64%	65%	64%	63%	77%	60%	67%	61%	63%	52%	59%	73%
F02/S03	63%	64%	63%	54%	74%	60%	75%	64%	*	78%	58%	59%
F03/S04	68%	68%	69%	63%	75%	62%	72%	66%	*	65%	70%	71%
F04/S05	64%	65%	64%	54%	75%	67%	72%	64%	43%	50%	64%	58%
F05/S06	65%	66%	65%	57%	73%	69%	71%	61%	54%	*	69%	68%
F06/S07	64%	63%	65%	51%	74%	63%	74%	62%	57%	*	64%	69%
F07/S08	65%	65%	65%	53%	75%	70%	70%	63%	*	*	68%	64%

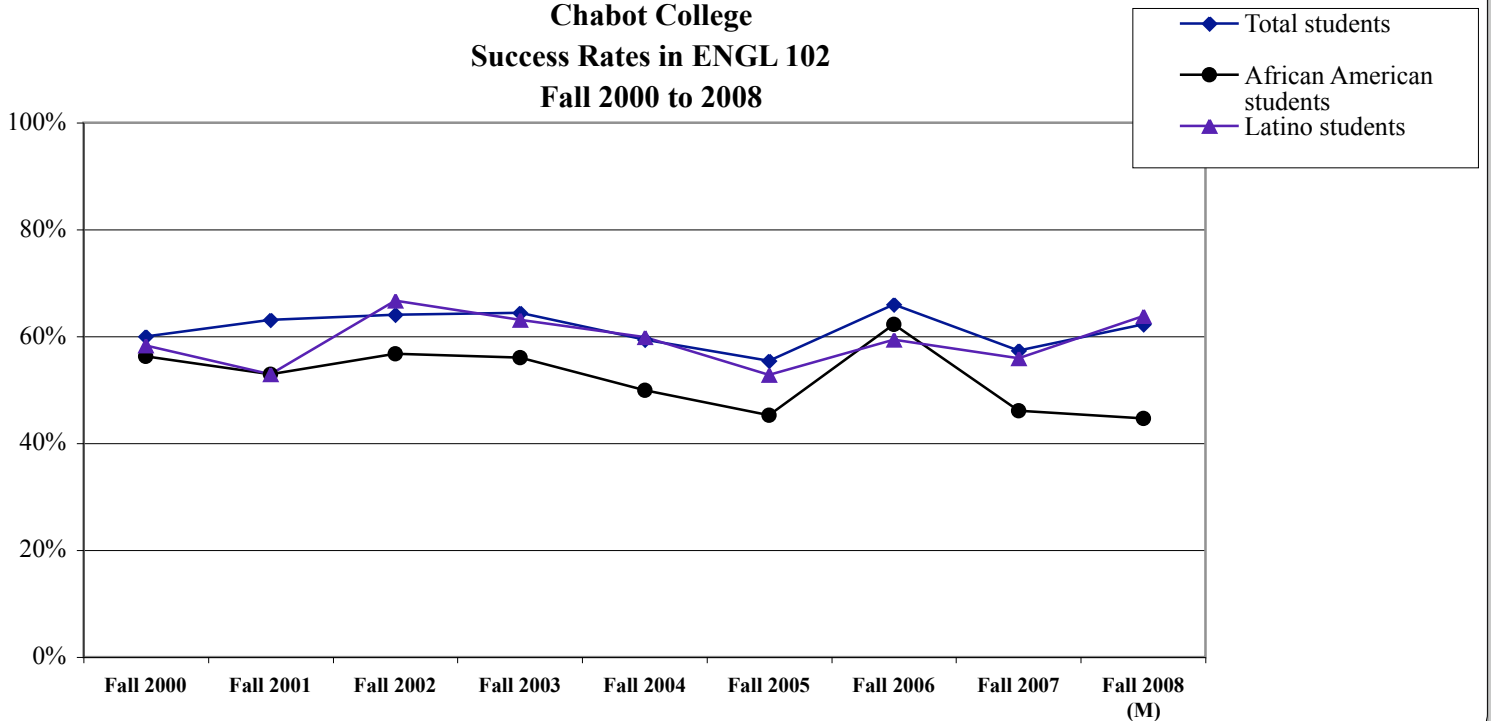
NOTES: * Less than 20 Students; Other category includes other and unknown.



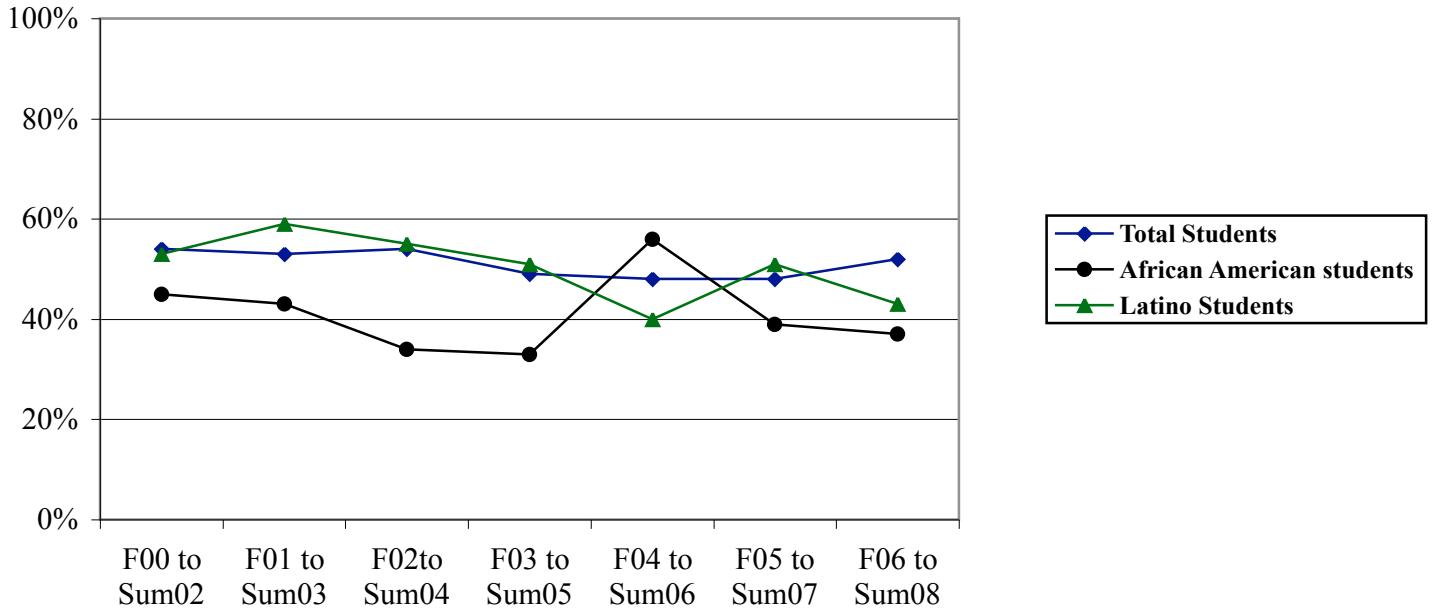
**Chabot College
Success Rates in ENGL 101A
Fall 2000 to Fall 2008**



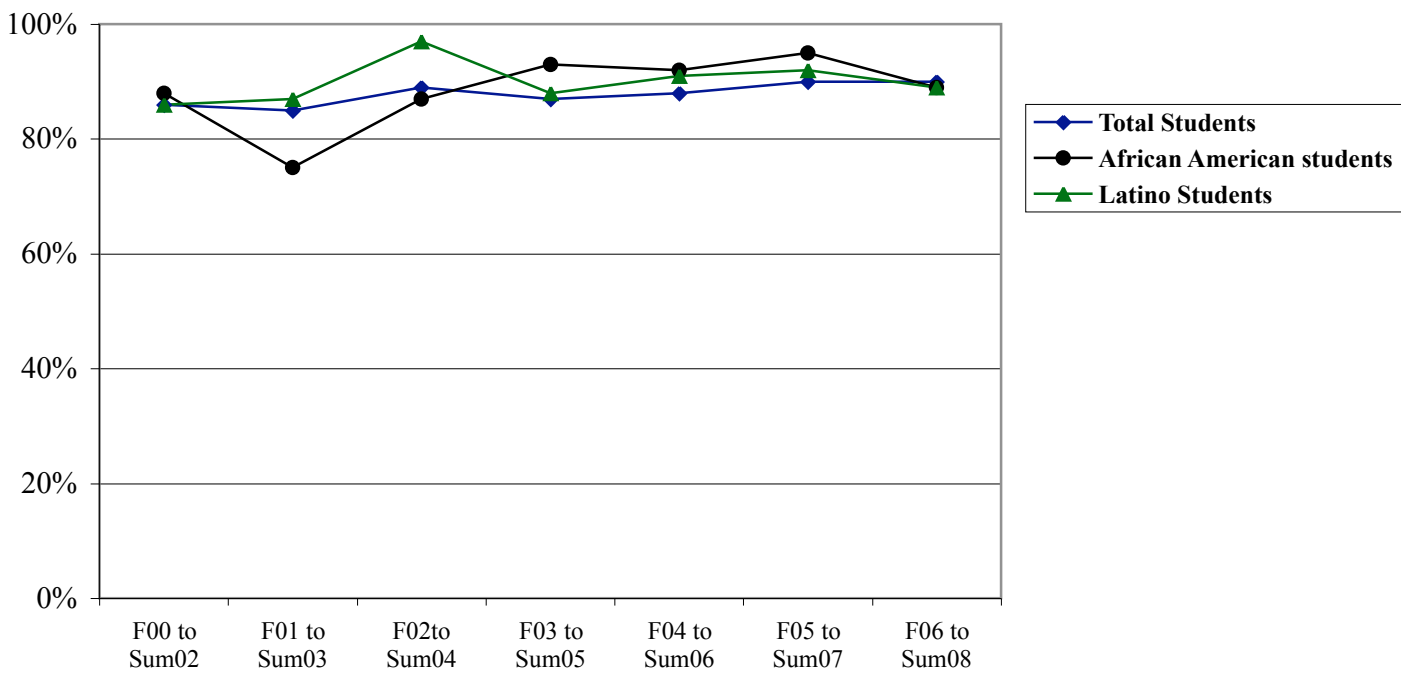
**Chabot College
Success Rates in ENGL 102
Fall 2000 to 2008**



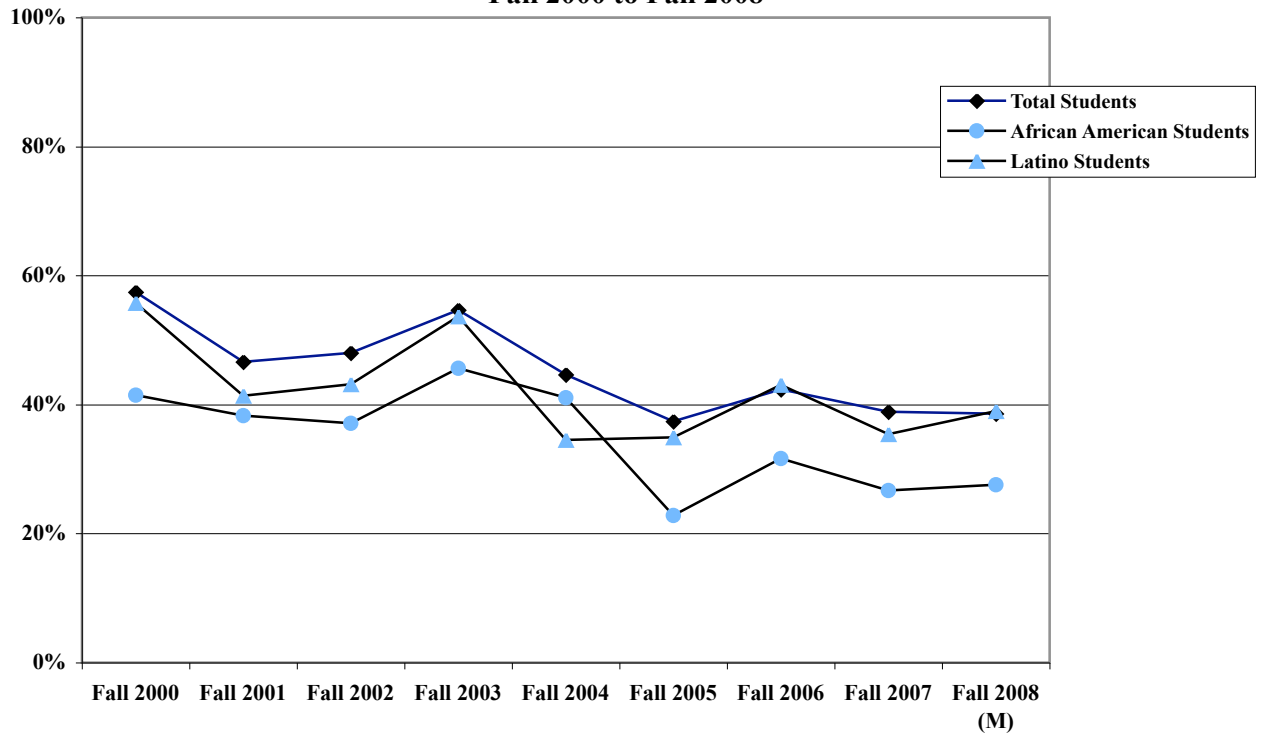
**Persistence Rates within 2 years
from English 101A to English 1A
Fall 00 to Fall 06 Cohorts**



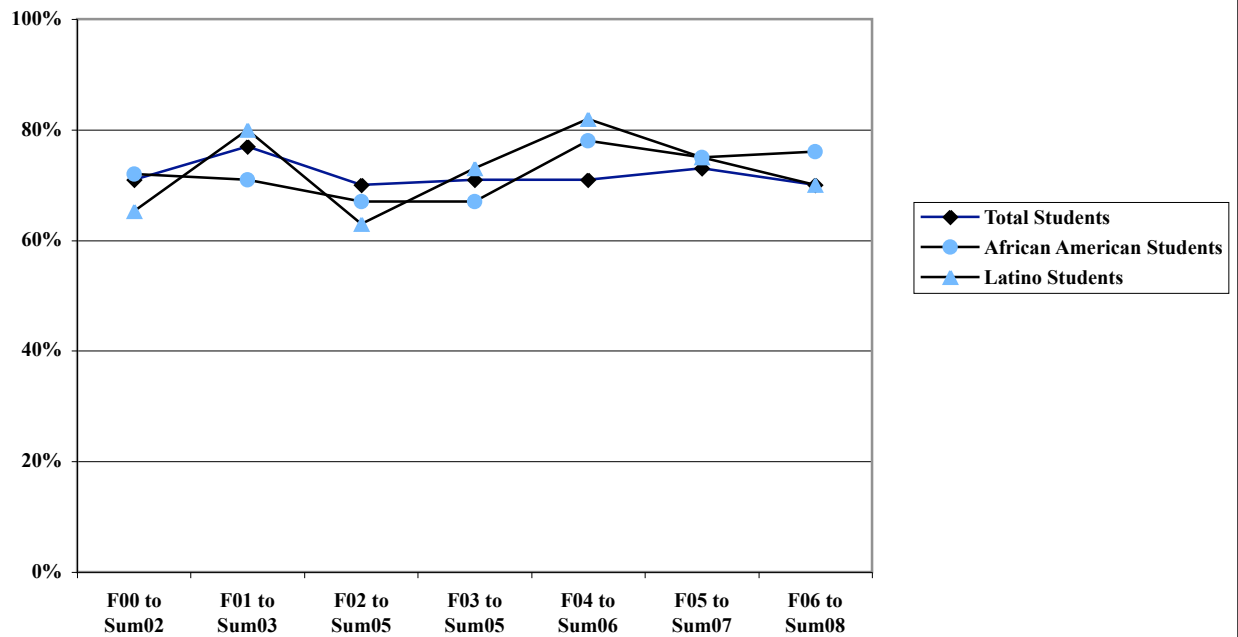
**Persistence Rates within 2 years
from English 102 to English 1A
Fall 00 to Fall 06 Cohorts**



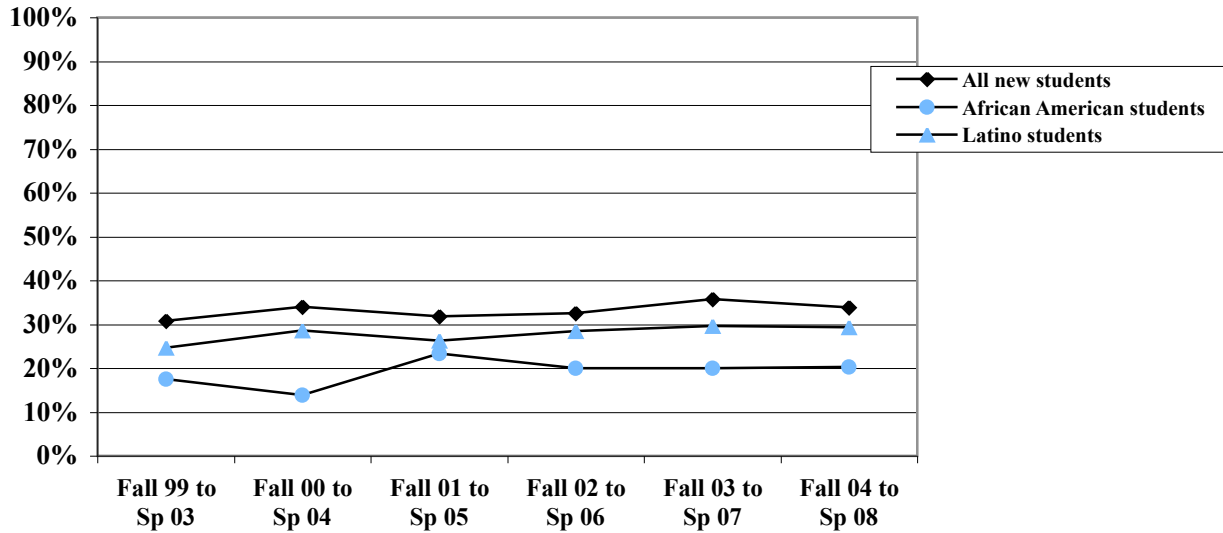
**Success Rates in MATH 55/55A (Intermediate Algebra)
Fall 2000 to Fall 2008**



**Persistence Rates within 2 years
from Math 55/55A to College-level Math
Fall 2000 to Fall 2006 Cohorts**



Chabot College
Percent Transfer-Directed after 4 years
(12 earned units, attempted College English OR Math)
New Student Cohorts: Fall 1999 through Fall 2004



Chabot College
Transfer-Ready Rate after 4 years
Percentage of Transfer-Ready (56+ transferable units, success in College English AND Math)
out of Transfer-Directed
New Student Cohorts: Fall 1999 through Fall 2004

