

Chabot College Student Satisfaction Survey: Fall 2017 Highlights

Financial Hardships and Challenges to Progress

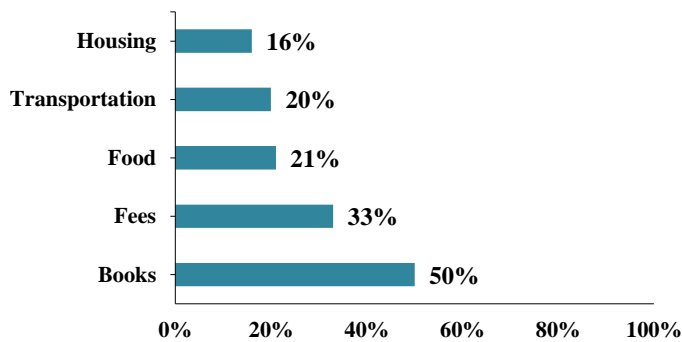
Many Chabot students have a hard time paying for basic student expenses, and these financial and other challenges slow their progress at Chabot. Eighty percent of Chabot students have a difficult time paying for at least one of five types of student expenses—housing, transportation, food, fees, or books. This is not surprising given that half of all Chabot students live in low-income households. Books are a financial challenge for half of the students, while about one-fifth have a hard time paying for housing, transportation, or food. One third find it difficult to pay the college fees.

Besides the struggle to pay for these expenses and the hardships that they cause in students' lives, these issues also slow the progress of students towards their educational goals. Two thirds of students report that their progress is slowed some or a lot due to job issues, financial pressures, and family pressures. About half are slowed due to our class schedule or health issues, while one quarter are impeded by lack of access to campus services. Citizenship issues are a barrier for 13% of the students. Latino students are slightly more likely than all students to be slowed by financial pressures.

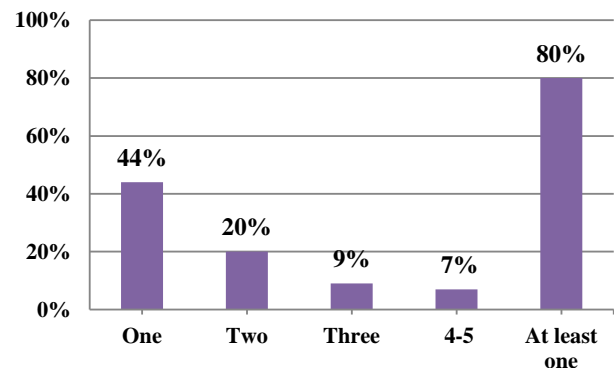
The Student Satisfaction Survey was conducted in October 2017 in a representative sample of 77 course sections. Surveys were completed by 1,702 students (59% full-time; 41% part-time). Responses were all anonymous.

Financial hardships in 2017

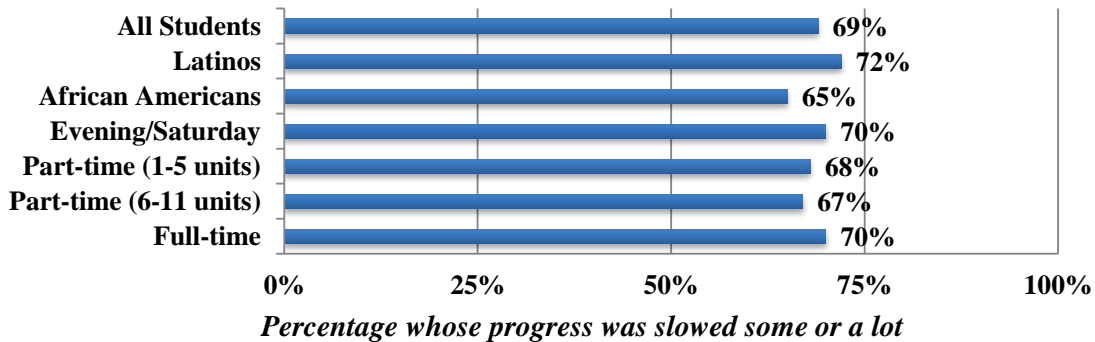
Percentage of students having hard time paying for:



Percentage of students with each number of financial hardships



How much do financial pressures slow progress at Chabot for different groups?



NOTE:
All percentages have a margin of error of 2 to 3 percentage points.

Challenges to Progress at Chabot

Percentage with progress slowed some or a lot due to each issue

How much do these issues slow your progress?	Some or a lot	Not at all
• Job issues (hours, sched, responsibilities)	69%	31%
• Financial pressures \$\$ for college/living)	69%	31%
• Family pressures or responsibilities	69%	31%
• Classes (length, start times, days of week)	55%	46%
• Health or personal problems	45%	55%
• Lack of access to campus services	26%	73%
• Citizenship issues	13%	87%

Full-time (12+units)	Part-time (6-11 units)	Part-time (1-5 units)	Sat/ Eve	African Americans	Latinos
67%	71%	73%	75%	61%	72%
70%	67%	68%	70%	65%	72%
70%	67%	68%	70%	65%	72%
56%	53%	50%	59%	52%	57%
45%	47%	43%	35%	43%	44%
26%	28%	25%	33%	23%	24%
14%	11%	12%	9%	13%	9%